

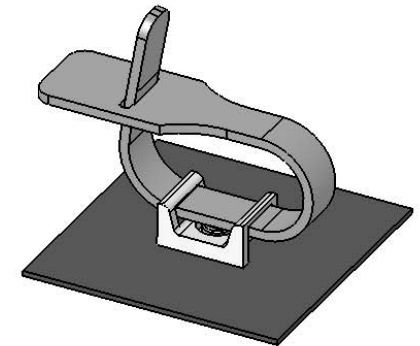
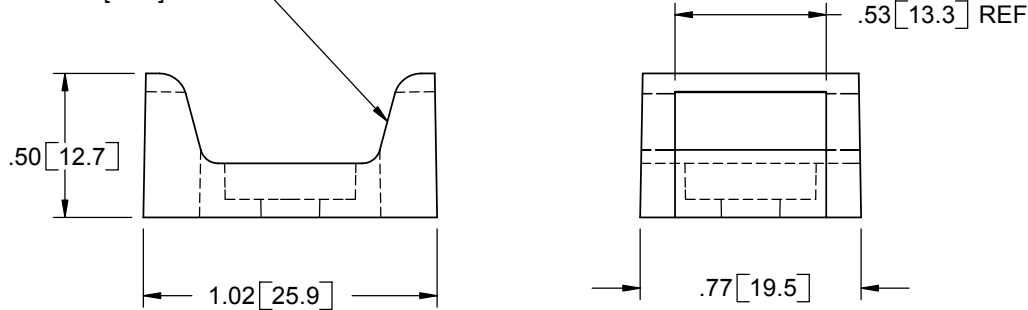
PART NO.	DIA. "D"	MOUNTING SCREW
FTH-27-RS-01	.205 [5.2]	#10 [M5] SCREW OR RIVETS
FTH-27-12-01	.230 [5.8]	#10 [M5] & #12 [M5] SCREWS

(USE PAN HEAD OD BINDER HEAD SCREWS)

MOUNTING RIVETS FOR FTH-27-RS

USE RIVET NO.	HOLE DIA. (CHASSIS)	FOR PANEL THICKNESS RANGE
SR-5055	.201 [5.1]	.035-.075 [0.9-1.9]
SR-5065	.201 [5.1]	.075-.114 [1.9-2.9]
SR-5075	.201 [5.1]	.114-.154 [2.9-3.9]
SR-5085	.201 [5.1]	.154-.193 [3.9-4.9]
SR-5095	.201 [5.1]	.193-.232 [4.9-5.9]
SR-5105	.201 [5.1]	.232-.272 [5.9-6.9]

ACCOMODATES "RKW" SERIES TIES UP TO 1/2 [12.7] WIDE



- NOTES:
 1. MATERIAL: NYLON 6/6 UL 94 V-2 (RMS-01).
 2. MATERIAL: NYLON 6/6 UL 94 V-0 (RMS-19), AVAILABLE BY SPECIAL ORDER ONLY. TO ORDER USE P/N: FTH-27-XX-19.
 3. COLOR: NATURAL.

TITLE: FLAT TIE HOLDER						DWG IN IN [MM]	
CREATED USING SOLIDWORKS	FILE #: FTH-27	DWN: SK	APP: -	FINAL			
TOLERANCES UNLESS NOTED XX=±.010 XXX=±.005 FRAC.=±1/64 ANG.=±1°	SHEET: 1 OF 1	SHEET SIZE: A	DT: 11/02/05	CHKD: -	PART #		PRINT TYPE
REV.	DESCRIPTION	ENGR.	DATE	RE: RICHCO, INC.	SEE TABLE		CA
D	COMPLETELY REDRAWN, SEE ECN #1090	SK	11/02/05	RICHCO, INC. ENG@RICHCO-INC.COM (773) 539-4060			
-	SEE ENGINEERING FOR REV A-C	-	-				

REV.	DESCRIPTION	ENGR.	DATE
D	COMPLETELY REDRAWN, SEE ECN #1090	SK	11/02/05
-	SEE ENGINEERING FOR REV A-C	-	-