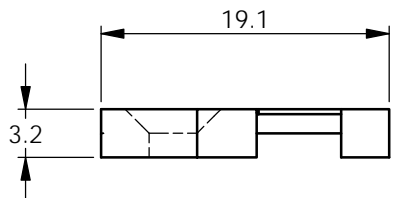
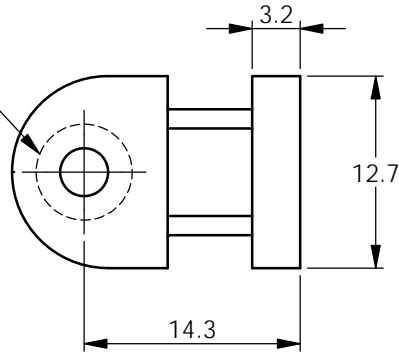
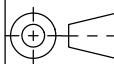


REV.	MODIFICATION.	DATE	DRN
01	CO2011066	18/02/11	SF

MOUNTING HOLE FOR  
A #8 FLAT HEAD SCREW



INFORMATION CONTAINED IN THIS DOCUMENT IS CONFIDENTIAL TO RICHCO INTERNATIONAL Co. Ltd. AND MAY NOT BE DISCLOSED OR REPRODUCED IN WHOLE OR PART WITHOUT THEIR WRITTEN CONSENT.

<b>RICHCO, INC.</b> WWW.RICHCO-INC.COM	ALL DIMENSIONS IN mm GENERAL TOLERANCES ±0.25 UNLESS OTHERWISE STATED 1 DECIMAL PLACE ± 2 DECIMAL PLACES ± ANGULAR ±1°	THIRD ANGLE 
---	---	---

MATERIAL: UL94 V-2 NYLON 6/6 (RMS-01*) COLOUR: NATURAL		
PART NUMBER	CABLE TIE ACCEPTED	MOUNTING SCREW
FTH-1-01-M	ALL RG CABLE TIES UP TO SIZE RG-220/320	M4 FLAT HEAD SCREW
*UL94 V-0 MATERIAL AVAILABLE BY SPECIAL ORDER ONLY. TO ORDER REPLACE -01 WITH -19.		

MATERIAL: See table		COLOUR: NATURAL	
DESCRIPTION: FTH-1		PART No: See Table	
DRG No: 011-016	NPR No: XXXX-XXX	SHEET SIZE A4	
DRN SF	DATE 18/02/11	CHKD JK	DATE 18/02/11
SCALE NTS	SHEET No. 1 OF 1		