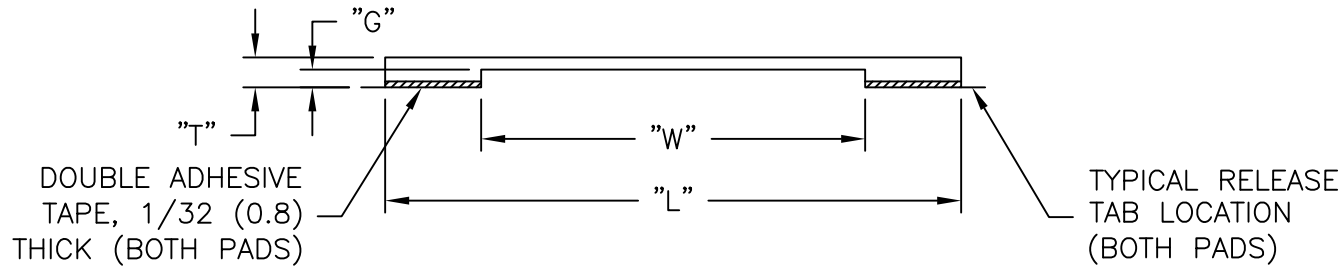
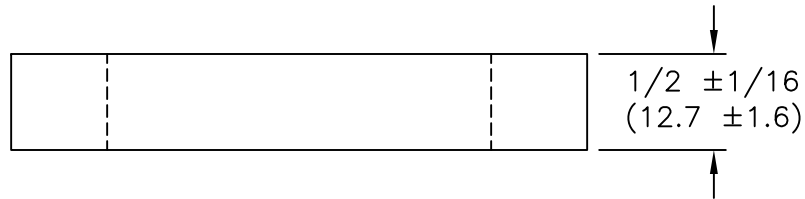


PART NO.	CLAMP WIDTH "L" +1/8 (3.2) -0 (0.0)	OPENING WIDTH "W" +1/16 (1.6) -0 (0.0)	CLAMP THICKNESS "T" +.015 (0.4) -.010 (0.3)	HOLDING THICKNESS "G" +.010 (0.3) -.020 (0.5)
FCC-4-3-RT	1-1/2 (38.1)	1/2 (12.7)	5/32 (4.0)	3/32 (2.4)
*FCC-6-3-RT	1.70 (43.2)	.70 (17.8)		
FCC-8-3-RT	2.0 (50.8)	1.0 (25.4)		
FCC-16-3-RT	3.0 (76.2)	2.0 (50.8)		
*FCC-24-3-RT	4.0 (101.6)	3.0 (76.2)		

*PARTS AVAILABLE BY SPECIAL ORDER



NOTES:

1. MATERIAL: PVC (RMS-04).
COLOR: BLACK.
2. TAPE: ACRYLIC ADHESIVE TAPE (RMS-15)

TITLE: FLAT CABLE CLAMPS			DWG IN IN(MM)		FINAL		PRINT TYPE	
E	SEE CO 200604 FOR CHANGES	SK 12.01.10	FILE # FCC	DWN: P.B.	APP:	PART # SEE TABLE	PRINT TYPE CA	
D	SEE ECN #1312 FOR CHANGES	SK 04.11.07	MAT'L: SEE NOTE	DT: 03-10-95	DT:			
C	DIM "W" .70 (17.8) WAS 3/4(19.1); CHANGED FILE NO.	SM 03.30.01	RE: RICHCO, INC.	RICHCO INC. PO BOX 804238, CHICAGO, 60680 (773) 539-4060				
B	CONVERTED TO ACAD	PB 03.10.95						
A	ADDED P/N FCC-6-3-RT	RS 05.18.92						
REV	DESCRIPTION	ENGR DATE	TOLERANCES UNLESS NOTED .XX=±.010 .XXX=±.005 FRAC=±1/64 ANG=1°					