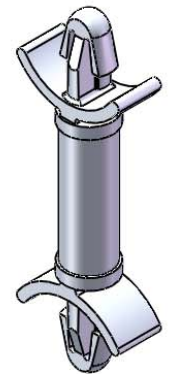


TO SNAP-LOCK IN A .125±.002
 [3.18±0.05] DIA. HOLE, IN A
 .031-.078 [0.79-1.98] PANEL THICKNESS
 (BOTH ENDS)

MATERIAL: NYLON 6/6 UL 94 V-2 (RMS-01) COLOR: NATURAL PART NO.	DIM. "A"±.015 [0.4]
DLCBSM-3-01	3/16 [4.8]
DLCBSM-4-01	1/4 [6.4]
DLCBSM-5-01	5/16 [7.9]
DLCBSM-6-01	3/8 [9.5]
DLCBSM-7-01	7/16 [11.1]
DLCBSM-8-01	1/2 [12.7]
DLCBSM-9-01	9/16 [14.3]
DLCBSM-10-01	5/8 [15.9]



NOTES:

- MATERIAL: NYLON 6/6 UL 94 V-0 (RMS-19)
COLOR: NATURAL.
AVAILABLE BY SPECIAL ORDER ONLY.
- ALTERNATE UNITS FOR REFERENCE ONLY.

D			REDRAWN, SEE ECN #1208 FOR CHANGES			SK	11/29/06	TITLE: DUAL LOCKING CIRCUIT BOARD SUPPORT, MINI			DWG IN IN [MM]		FINAL		PRINT TYPE		
-			SEE ENGINEERING FOR REVISIONS A-C			---	----	FILE #: DLCBSM			DWN: SK		APP: RT		PART #		
REV.			DESCRIPTION			ENGR.	DATE	SHEET: 1 OF 1			SHEET SIZE: A		DT: 11/29/06		CHKD: SJ		
									RE: RICHCO, INC.			RICHCO, INC.		SEE TABLE		CA	
												ENG@RICHCO-INC.COM		(773) 539-4060			

CREATED USING
SOLIDWORKS

TOLERANCES
UNLESS NOTED
.XX=±.010
.XXX=±.005
FRAC.=±1/64
ANG.=±1°