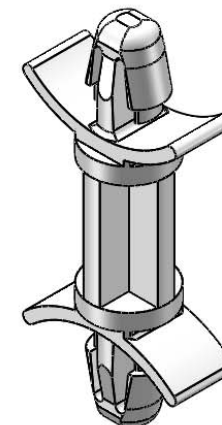


TO SNAP-LOCK IN A .187±.003
[4.75±0.08] DIA. HOLE, IN A
.031-.078 [0.79-1.98] PANEL THICKNESS
(BOTH ENDS)

MATERIAL: NYLON 6/6 UL 94 V-2 (RMS-01) COLOR: NATURAL PART NO.	MATERIAL: NYLON 6/6 UL 94 V-0 (RMS-19) COLOR: NATURAL PART NO.	DIM. "A"±.015 [0.4]
DLCBS2-3-01	DLCBS2-3-19	3/16 [4.8]
DLCBS2-4-01	DLCBS2-4-19	1/4 [6.4]
DLCBS2-6-01	DLCBS2-6-19	3/8 [9.5]
DLCBS2-8-01	DLCBS2-8-19	1/2 [12.7]
DLCBS2-9-01	DLCBS2-9-19	9/16 [14.3]
DLCBS2-10-01	DLCBS2-10-19	5/8 [15.9]
DLCBS2-12-01	DLCBS2-12-19	3/4 [19.1]
DLCBS2-14-01	DLCBS2-14-19	7/8 [22.2]



NOTES:
1. MATERIAL: NYLON 6/6 UL 94 HB (RMS-73)
COLOR: NATURAL.
AVAILABLE BY SPECIAL ORDER ONLY.
TO ORDER USE P/N DLCBS2-X-73
2. ALTERNATE UNITS FOR REFERENCE ONLY.

TITLE: DUAL LOCKING CIRCUIT BOARD SUPPORT, TYPE 2				⊕	≡	DWG IN IN [MM]	QR
CREATED USING SOLIDWORKS	FILE #: DLCBS2	DWN: SK	APP: RT	FINAL			
TOLERANCES UNLESS NOTED .XX=±.010 .XXX=±.005 FRAC.=±1/64 ANG.=±1°	SHEET: 1 OF 1	SHEET SIZE: A	DT: 11/27/06	CHKD: SJ	PART #		PRINT TYPE
RE: RICHCO, INC.	RICHCO, INC. ENG@RICHCO-INC.COM (773) 539-4060		SEE TABLE		CA		

REV.	DESCRIPTION	ENGR.	DATE
E	SEE CO 200317 FOR CHANGES	SK	02/03/09
D	REDRAWN, SEE ECN #1208 FOR CHANGES	SK	11/29/06
-	SEE ENGINEERING FOR REVISIONS A-C	---	----