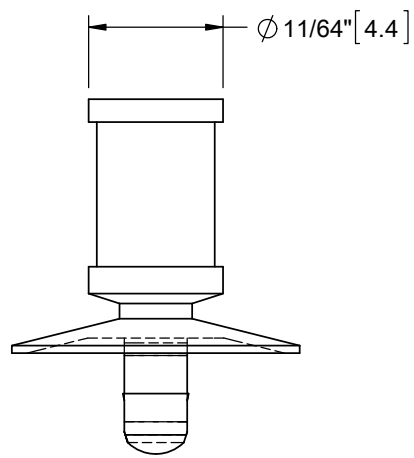
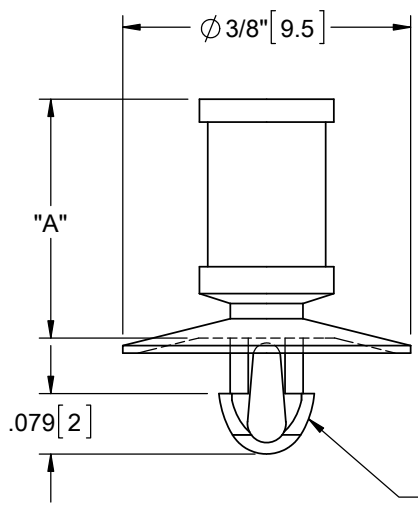
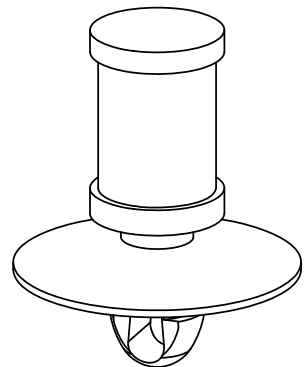
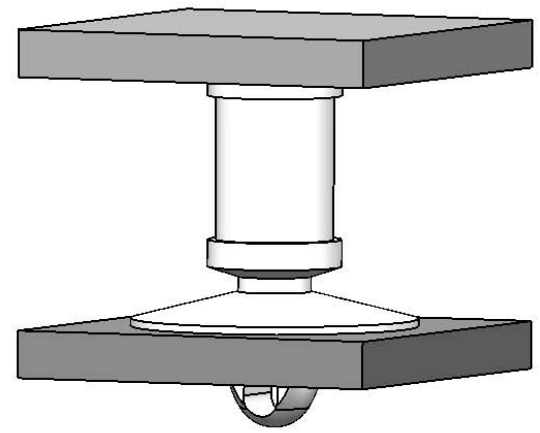
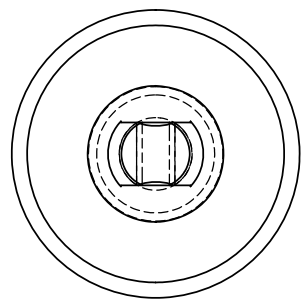


PART NO.	DIM. "A"±.015
CPST-2-01	1/8 [3.2]
CPST-3-01	3/16 [4.8]
CPST-4-01	1/4 [6.4]
CPST-5-01	5/16 [7.9]
CPST-6-01	3/8 [9.5]
CPST-7-01	7/16 [11.1]
CPST-8-01	1/2 [12.7]
CPST-9-01	9/16 [14.3]
CPST-10-01	5/8 [15.9]



TO SNAP LOCK IN A  $\varnothing .100 \pm .002$   
 $[2.54 \pm 0.05]$  HOLE, IN A  
 $.062 [1.57]$  THICK BOARD



NOTES:

1. STANDARD MATERIAL: NYLON 6/6 UL94 V-2 (RMS-01), COLOR NATURAL.
2. ALTERNATE MATERIAL: NYLON 66/6 UL94 V-0 (RMS19), COLOR NATURAL.  
 AVAILABLE BY SPECIAL ORDER. TO ORDER REPLACE "-01" WITH "-19".
3. ALTERNATE UNITS FOR REFERENCE ONLY.

A	REDRAWN, SEE CO 200706	SK	09/08/11
REV.	DESCRIPTION	ENGR.	DATE

TITLE: <b>CUPPED PUSH SPACER, TEARDROP</b>				UNITS= IN [mm]		FINAL	
CREATED USING SOLIDWORKS		FILE #: CPST	DWN: SK	APP: SK		PART #	
TOLERANCES UNLESS NOTED XX=±.010 .XXX=±.005 FRAC.=±1/64 ANG.=±1°		SHEET: 1 OF 2	SHEET SIZE: A	DT: 09/08/11	CHKD: DZ	PRINT TYPE	
RE: RICHCO, INC. --		RICHCO, INC. WWW.RICHCO-INC.COM		SEE TABLE		CA	

