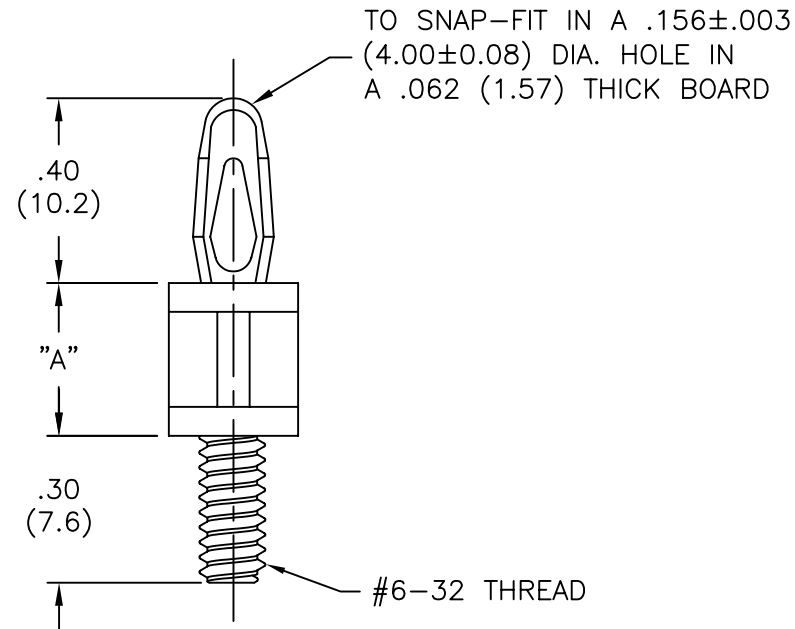
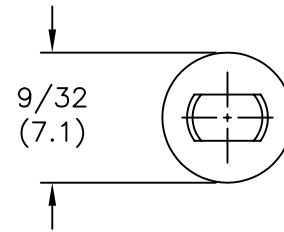


AVAILABLE BY SPECIAL ORDER ONLY

NYLON 6/6 (RMS-01) COLOR: NATURAL PART NO.	FLAME RET. (RMS-19) COLOR: NATURAL PART NO.	DIM. "A" ±.015 (±0.4)
CBS-TM-4-01	CBS-TM-4-19	1/4 (6.4)
CBS-TM-6-01	CBS-TM-6-19	3/8 (9.5)
CBS-TM-8-01	CBS-TM-8-19	1/2 (12.7)
CBS-TM-10-01	CBS-TM-10-19	5/8 (15.9)
CBS-TM-12-01	CBS-TM-12-19	3/4 (19.1)
CBS-TM-14-01	CBS-TM-14-19	7/8 (22.2)
CBS-TM-16-01	CBS-TM-16-19	1 (25.4)
CBS-TM-18-01	CBS-TM-18-19	1-1/8 (28.6)
CBS-TM-20-01	CBS-TM-20-19	1-1/4 (31.8)
CBS-TM-22-01	CBS-TM-22-19	1-3/8 (34.9)
CBS-TM-24-01	CBS-TM-24-19	1-1/2 (38.1)



NOTES:  
1. M4 THREAD AVAILABLE BY SPECIAL ORDER ONLY.  
TO ORDER, ADD "-M4" TO PART NO.  
EXAMPLE: CBS-TM-M4-8-XX

G SEE ECN #862 FOR CHANGES SM 10.04.04			TITLE: CBS THREADED MALE				DWG IN IN (MM)		FINAL	
F	UPDATED PRINT AND CHANGED FILE NO.	SM 05.08.02	TOLERANCES UNLESS NOTED	FILE # CBS-TM	DWN: P.B.	APP:				
E	FR-NYLON REMOVED FROM CHART	J.L. 8.17.98	.XX=±.010	MAT'L: SEE TABLE	DT: 06-20-94	DT:	PART #		PRINT TYPE	
D	RMS-19 BY SPECIAL ORDER ADDED	J.L. 12.18.97	.XXX=±.005	RE: RICHCO, INC.	RICHCO INC.		SEE TABLE		CA	
C	CHANGED CHART AND ADDED DIMS	JB 09.27.95	FRAC=±1/64		PO BOX 804238, CHICAGO, 60680					
B	ADD PART NOS. CBS-TM-18 TO CBS-TM-24	RS 04.06.93	ANG=±1°		(773) 539-4060					
REV	DESCRIPTION	ENGR DATE								