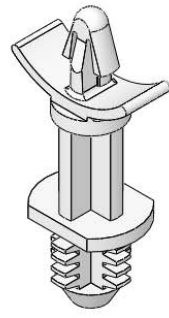


| MATERIAL: NYLON 6/6 UL 94 V-2 (RMS-01) COLOR: NATURAL PART NO. | "A"±.015 [0.4] | "B"±.015 | "C"±.015 | HOLE DIA. ±.003 [0.08] | PANEL THICKNESS |
|---|----------------|-------------|-------------|---------------------------|--------------------|
| BHDL-4-01 | 1/4 [6.4] | 7/16 [11.1] | 5/16 [7.9] | .312 [7.92] | 1/4 [6.4] MIN |
| BHDL-6-01 | 3/8 [9.5] | | | | |
| BHDL-8-01 | 1/2 [12.7] | | | | |
| BHDL-10-01 | 5/8 [15.9] | | | | |
| BHDL-12-01 | 3/4 [19.1] | | | | |
| BHDL-14-01 | 7/8 [22.2] | 3/8 [9.5] | 17/64 [6.7] | .250 [6.35] | 1/4 [6.4] MIN |
| *BHDL1-4-01 | 1/4 [6.4] | | | | |
| *BHDL1-6-01 | 3/8 [9.5] | | | | |
| *BHDL1-8-01 | 1/2 [12.7] | | | | |
| *BHDL1-10-01 | 5/8 [15.9] | | | | |
| *BHDL1-12-01 | 3/4 [19.1] | | | | |
| *BHDL1-14-01 | 7/8 [22.2] | | | | |

*PARTS AVAILABLE BY SPECIAL ORDER ONLY



- NOTES:
 1. MATERIAL: NYLON 6/6 UL 94 V-0 (RMS-19),
 COLOR: NATURAL.
 AVAILABLE BY SPECIAL ORDER ONLY.
 2. ALTERNATE UNITS FOR REFERENCE ONLY

| TITLE: BLIND HOLE DUAL LOCKING CIRCUIT BOARD SUPPORT | | | DWG IN IN [MM] | | FINAL | |
|--|------------------------------------|---------------|----------------|------------------|-------|--------------------------------------|
| CREATED USING SOLIDWORKS | FILE #: BHDL | DWN: SK | APP: RT | PART # | | PRINT TYPE |
| TOLERANCES UNLESS NOTED XX=±.010 .XXX=±.005 FRAC.=±1/64 ANG.=±1° | SHEET: 1 OF 1 | SHEET SIZE: A | DT: 11/28/06 | | | |
| F | SEE CO 200035 FOR CHANGES | SK | 09/26/07 | SEE TABLE | | CA |
| E | SEE ECN #1262 FOR CHANGES | SK | 12/11/06 | | | |
| D | REDRAWN, SEE ECN #1208 FOR CHANGES | SK | 11/29/06 | | | |
| - | SEE ENGINEERING FOR REVISIONS A-C | --- | ---- | | | |
| REV. | DESCRIPTION | ENGR. | DATE | RE: RICHCO, INC. | | ENG@RICHCO-INC.COM (773) 539-4060 |