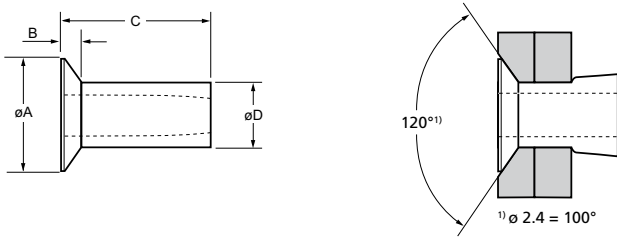




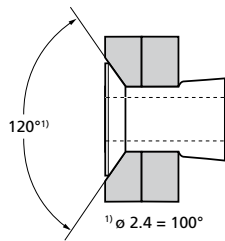
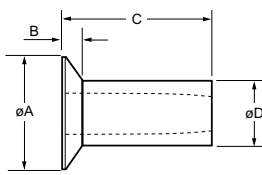
For installation information please refer to the tooling overview and manuals on our website.
 Pour les conditions de pose, merci de vous référer à la description de l'outil et aux manuels disponibles sur notre site Web.
 Angaben zur Verarbeitung entnehmen Sie bitte der Geräteübersicht und den Betriebsanleitungen auf unserer Website.
 Per informazioni sull'installazione preghiamo consultare i manuali e la panoramica degli attrezzi sul nostro sito web.
 Para ver información sobre máquinas de colocación, consulte nuestra página web, apartados visión general de máquinas y manuales.

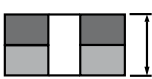

English	Français	Deutsch	Italiano	Español
Countersunk head	Tête fraisée	Senkkopf	Testa svasata	Cabeza avellanada
Aluminium alloy Natural	Alliage d'aluminium Brut	Aluminium Blank	Lega di alluminio Nessuna finitura	Aluminio Natural



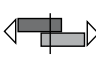
ø	Cross-section		Thread		øA	B	C	øD	Fasteners per pod/ Nombre de rivets par chargeur / Niete pro Magazin / Rivetti per caricatore / Uds./carga	Aluminium		
	min.	max.	min.	max.						2.5 % Mg AA 5052 DIN 1725 AlMg2.5 Werkstoff 3.3523	3.5 % Mg BS 1473 5154A DIN 1725 AlMg3.5 Werkstoff 3.3535	5 % Mg BS 1473 5056A DIN 1725 AlMg5 Werkstoff 3.3555
nom.	min.	max.	min.	max.	min.	max.	max.	max.	± 1	Part No/ref	Part No/ref	Part No/ref
2.4 (3/32")		1.57	2.49	2.55	4.1	0.9	3.31	2.46	90	01124-00304	01132-00304	
	1.57	3.17					4.88		61	01124-00306	01132-00306	
	3.17	4.75					6.48		46	01124-00308	01132-00308	
	4.75	6.35					8.06		37		01132-00310	
	6.35	7.92					9.66		31		01132-00312	
3.2 (1/8")		1.57	3.28	3.34	5.2	1.0	3.31	3.25	90	01124-00404	01132-00404	01136-00404
	1.57	3.17					4.88		61	01124-00406	01132-00406	01136-00406
	3.17	4.75					6.48		46	01124-00408	01132-00408	01136-00408
	4.75	6.35					8.06		37	01124-00410	01132-00410	01136-00410
	6.35	7.92					9.66		31	01124-00412	01132-00412	01136-00412
4.0 (5/32")	1.57	3.17	4.09	4.16	6.2	1.0	4.88	4.04	61	01124-00506	01132-00506	01136-00506
	3.17	4.75					6.48		46	01124-00508	01132-00508	01136-00508
	4.75	6.35					8.06		37	01124-00510	01132-00510	01136-00510
	6.35	7.92					9.66		31	01124-00512	01132-00512	01136-00512
	7.92	9.52					11.23		26	01124-00514	01132-00514	01136-00514
	9.52	11.10					12.83		23	01124-00516	01132-00516	01136-00516

all dimensions in mm / en millimètres / alle Maße in mm / in millimetri / en milímetros



ø					øA	B	C	øD	Fasteners per pod/ Nombre de rivets par chargeur / Niete pro Magazin / Rivetti per caricatore / Uds./carga	Aluminium		
										2.5 % Mg AA 5052 DIN 1725 AlMg2.5 Werkstoff 3.3523	3.5 % Mg BS 1473 5154A DIN 1725 AlMg3.5 Werkstoff 3.3535	5 % Mg BS 1473 5056A DIN 1725 AlMg5 Werkstoff 3.3555
nom.	min.	max.	min.	max.	min.	max.	max.	± 1	Part No/ref	Part No/ref	Part No/ref	
4.8 (3/16")	1.57	3.17	4.85	4.93	8.6	1.5	5.69	52	01124-00607	01132-00607	01136-00607	
	3.17	4.75					7.27	41	01124-00609	01132-00609	01136-00609	
	4.75	6.35					8.87	33	01124-00611	01132-00611	01136-00611	
	6.35	7.92					10.44	28	01124-00613	01132-00613	01136-00613	
	7.92	9.52					12.04	25	01124-00615	01132-00615	01136-00615	
	9.52	11.10					13.62	22	01124-00617	01132-00617	01136-00617	
	11.10	12.70					15.22	19	01124-00619	01132-00619	01136-00619	
6.4 (1/4")	3.17	4.75	6.35	6.42	10.2	1.5	7.27	41	01124-00809	01132-00809	01136-00809	
	4.75	6.35					8.87	33	01124-00811	01132-00811	01136-00811	
	6.35	7.92					10.44	28	01124-00813	01132-00813	01136-00813	
	7.92	9.52					12.04	25	01124-00815	01132-00815	01136-00815	
	9.52	11.10					13.62	22	01124-00817	01132-00817	01136-00817	
	11.10	12.70					15.22	19	01124-00819	01132-00819	01136-00819	

all dimensions in mm / en millimètres / alle Maße in mm / in millimetri / en milímetros

ø			
	1124 Series kN ¹⁾	1132 Series kN ¹⁾	1136 Series kN ¹⁾
2.4 mm (3/32")	0.3	0.5	0.5
3.2 mm (1/8")	0.6	0.9	0.9
4.0 mm (5/32")	1.0	1.6	1.6
4.8 mm (3/16")	1.5	2.0	2.0
6.4 mm (1/4")	1.9	2.7	2.7

1) typical values / valeurs moyennes / typische Werte / Valori tipici / resistencias máximas recomendadas