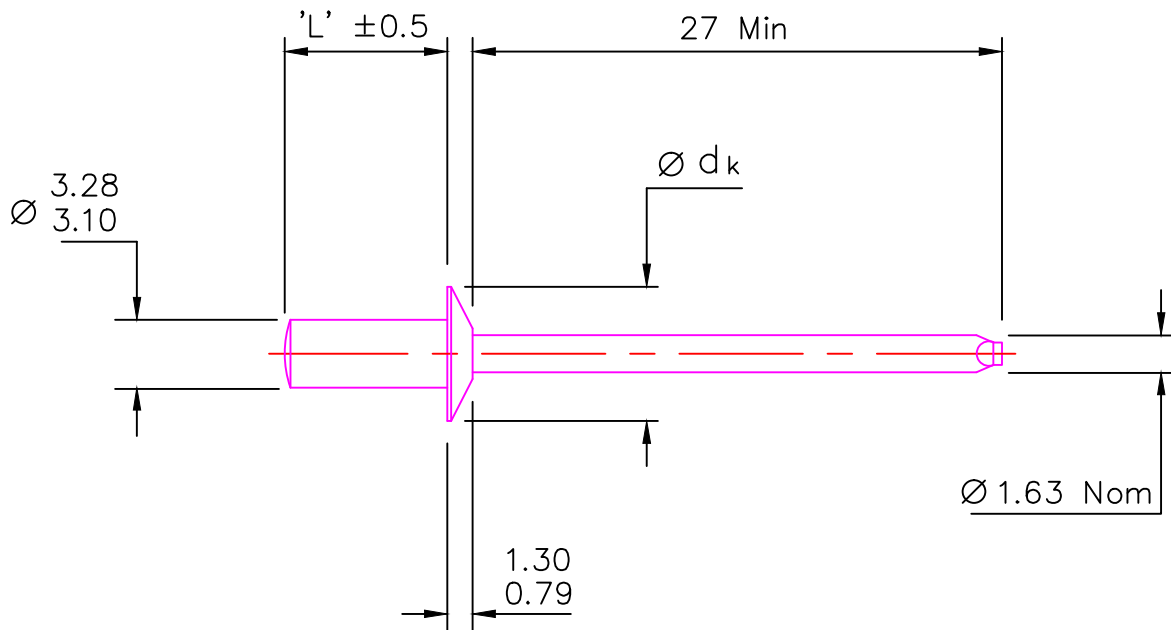


AD 4 SIZE



PRODUCT	'L'	GRIP RANGE	Ø dk
AD42 SB	6.0	UP TO 1.6	5.6 – 6.4
AD44 SB	7.7	1.6 – 3.2	5.6 – 6.4
AD46 SB	9.2	3.2 – 4.8	5.6 – 6.4
AD48 SB	10.8	4.8 – 6.4	5.6 – 6.4
AD45 H	12.4	6.4 – 7.9	6.3 – 6.91
AD46 H	14.0	7.9 – 9.5	6.3 – 6.91
AD48 H	17.2	9.5 – 12.7	6.3 – 6.91

MANDREL MATERIAL Carbon Steel

RIVET BODY MATERIAL Aluminium Alloy Al Mg5 REF DRAWING R2002

SHEAR STRENGTH 1110N TENSILE STRENGTH 1400N HOLE DIAMETER 3.3 TO 3.4

This drawing is the property of <b>Tucker Fasteners Ltd.</b> It is confidential and must not be lent or copied except by written consent.	TITLE	12OCT12	21355	4	RE
	4 SIZE POP CLOSED END ALUMINIUM DOMED HEAD POP RIVET USA MANUFACTURE	4NOV03	19165	3	RE
		EIN DATE	EIN No	ISSUE	APPROVED

ALL DIMENSIONS ARE IN MILLIMETRES SCALE 3 : 1 DR S.DEAN Date DEC99

SHEET 1 OF 1	<p>© TUCKER FASTENERS Ltd. EMHART FASTENING TEKNOLOGIES Walsall Road, Birmingham B42 1BP, England. A BLACK &amp; DECKER COMPANY</p>	DRAWING No. 303280
A4PROD A4		