

## FinAlu® continuous hinge

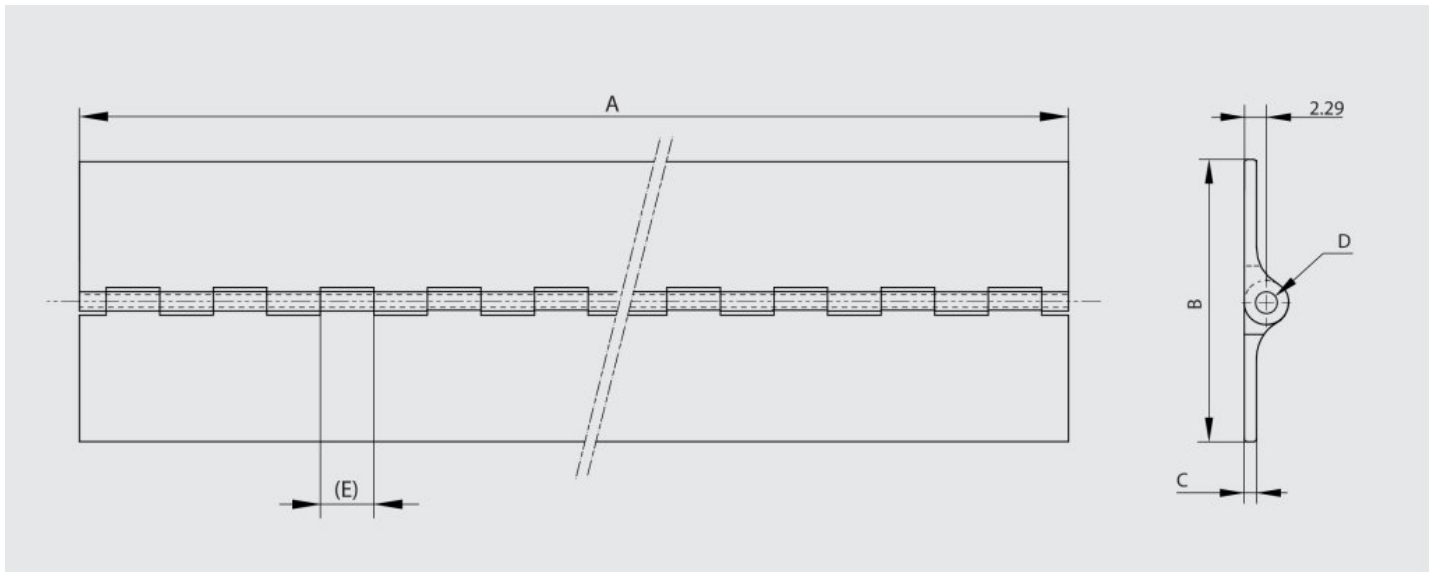
Model : 72-1-4246



Continuous hinges in aluminium profile with a small pin diameter.

This nice design can be used in many applications (medical, electronic enclosures, food equipment, transportation...).

These hinges have the same dimensions as hinges used in the aircraft industry.



Material	6082 T5 alu
Finish	raw
A (length)	1830
B (width)	44.45
D (pin diameter)	2.2
C	1.3
E	12.7
Weight (g)	380
Opening angle	270
Note	undrilled
Material	aluminium
Functions	free swing hinges
Pin material	stainless steel

