

Forged hinges with reversed leaves - 3 knuckles

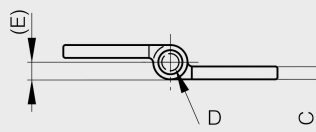
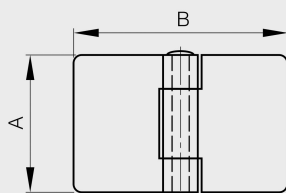
Model : 72-1-3992



Riveted pin.

Other dimensions or variants are available on request.

Raw steel pin for raw steel hinges. 304 stainless steel pin for 304 stainless steel hinges.



Material	304 stainless steel
Finish	raw
A (length)	50
B (width)	50
D (pin diameter)	4
C	3
E	4
Weight (g)	71
Opening angle	270
Note	20 MR (railway code)
Material	stainless steel
Functions	for railway applications