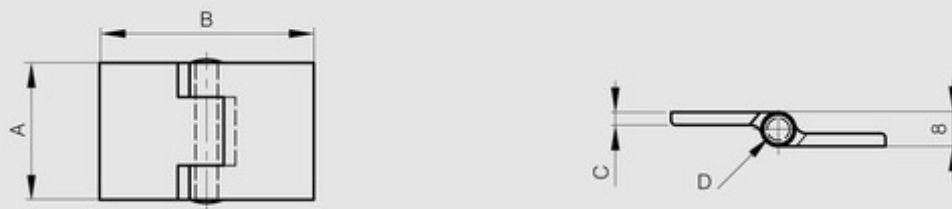


Aluminium hinges with reversed leaves - 50 mm width

Model : 72-1-3638



Hinge with 304 stainless steel riveted pin.



Material

6060 T5 alu

Finish	raw
A (length)	50
D (pin diameter)	5.2
B (width)	50
C	3
Weight (g)	30
Opening angle	270
Material	aluminium
Functions	free swing hinges