

Forged hinges - 5 knuckles

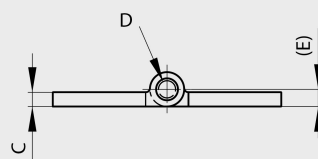
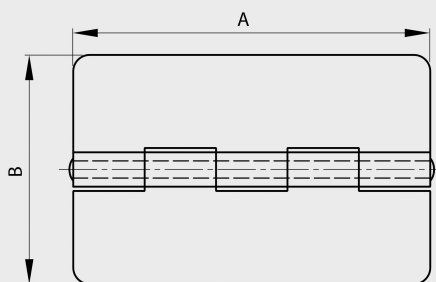
Model : 72-1-3417



Riveted pin (except part number: 72-1-4288 with removable pin).

Other dimensions or variants are available on request.

Raw steel pin for raw steel hinges. 304 stainless steel pin for 304 stainless steel hinges.



Material	steel
Finish	raw
A (length)	125
B (width)	130
D (pin diameter)	10
C	8
E	10
Weight (g)	1240
Opening angle	270
Note	24 FR (railway code)
Material	steel
Functions	for railway applications