

Forged hinges - 5 knuckles

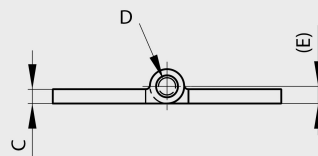
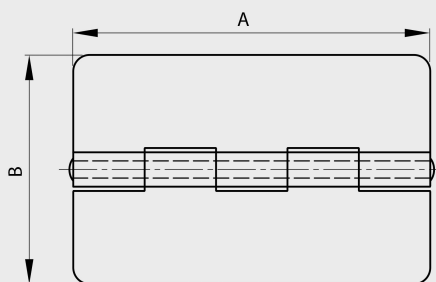
Model : 72-1-3412



Riveted pin (except part number: 72-1-4288 with removable pin).

Other dimensions or variants are available on request.

Raw steel pin for raw steel hinges. 304 stainless steel pin for 304 stainless steel hinges.



| | |
|------------------|--------------------------|
| Material | steel |
| Finish | raw |
| A (length) | 80 |
| B (width) | 130 |
| D (pin diameter) | 6 |
| C | 5 |
| E | 6 |
| Weight (g) | 436 |
| Opening angle | 270 |
| Note | 3 FR (railway code) |
| Material | steel |
| Functions | for railway applications |