

Forged hinges - 3 knuckles

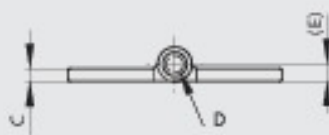
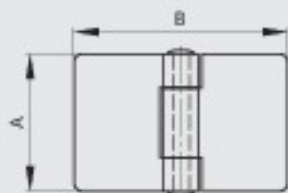
Model : 72-1-3349



Riveted pin.

Other dimensions or variants are available on request.

Raw steel pin for raw steel hinges. 304 stainless steel pin for 304 stainless steel hinges.



Material	steel
Finish	raw
A (length)	50
B (width)	50
D (pin diameter)	4
C	3
E	4
Weight (g)	75
Opening angle	270
Note	4 MR (railway code)
Material	steel
Functions	for railway applications