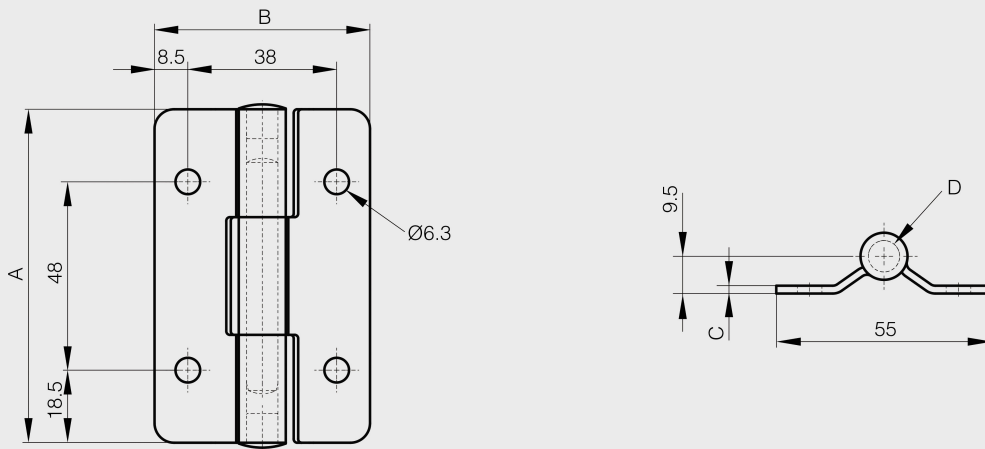


## Hinge with or without friction in stainless steel - friction torque 5 N.m

Model : 62-1-3712



Constant torque. Stable at various temperatures.  
Pin in steel.



Material	301 stainless steel
Finish	raw
A (length)	85
B (width)	55
D (pin diameter)	12
C	2
Weight (g)	155
Opening angle	270
Note	with torque
Material	stainless steel
Functions	friction
Torque	5 N.m