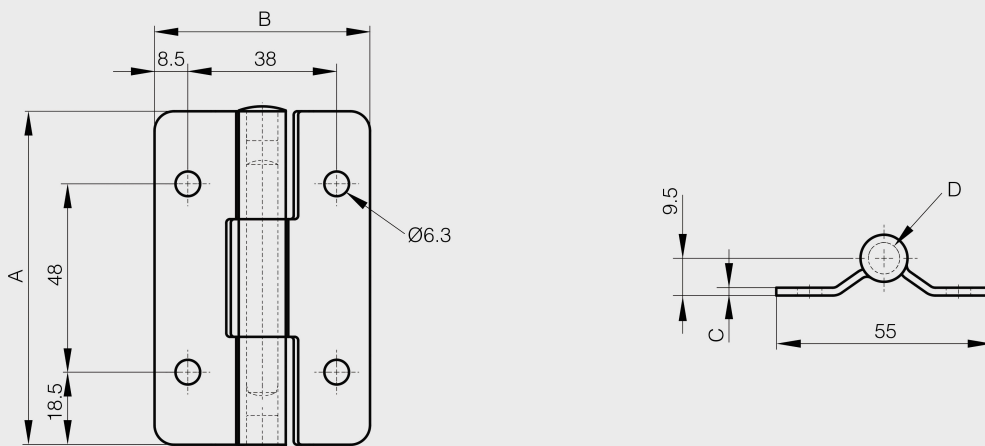


Hinge with or without friction in stainless steel - friction torque 3 N.m

Model : 62-1-3711



Constant torque. Stable at various temperatures.
Pin in steel.



Material	301 stainless steel
Finish	raw
A (length)	85
B (width)	55
D (pin diameter)	8
C	2
Weight (g)	120
Opening angle	270
Note	no torque
Material	stainless steel
Functions	friction