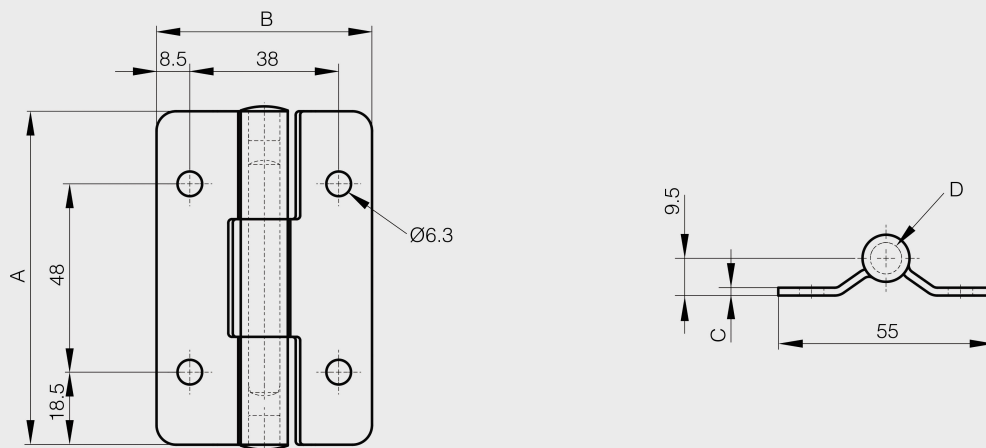


Friction hinge in stainless steel - friction torque 3 N.m

Model : 62-1-3710



Constant torque. Stable at various temperatures.
Pin in steel.



Material	301 stainless steel
Finish	raw
A (length)	85
D (pin diameter)	8
B (width)	55
C	2
Weight (g)	120
Opening angle	270
Note	with torque
Material	stainless steel
Functions	friction
Torque	3 N.m