

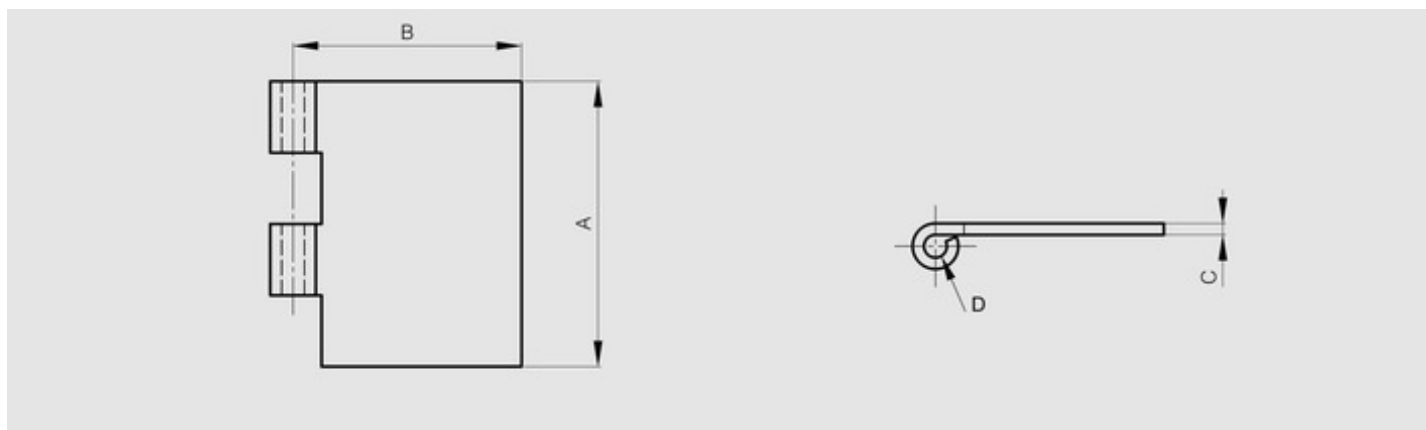
Half leaves for Modulo hinges - thickness 5 mm

Model : 52-1-3782



Leaves can be combined together and with either:

- a 10 mm diameter expanded pin (BG) (part numbers 27-1-3822, 27-1-3825),
- a 10 mm diameter headed pin (BT) (part numbers 27-1-3828, 27-1-3831) with a plug (part numbers 27-1-3834, 27-1-3837).



Material	304 stainless steel
Finish	deburred
A (length)	120
B (width)	40
D (pin diameter)	10
C	5
Weight (g)	258
Opening angle	270
Material	stainless steel
Functions	Modulo system