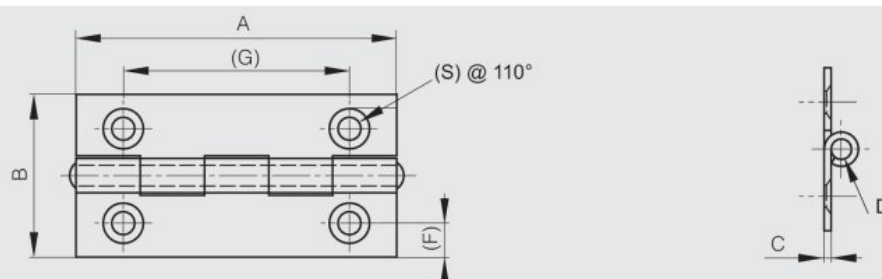


Hinge 50 x 30 mm

Model : 52-1-3571



Drilled hinge with riveted pin.



Material

304 stainless steel

Finish	raw
A (length)	50
B (width)	30
D (pin diameter)	3
C	1
Weight (g)	16
G (pitch)	35
F (pitch)	6.5
Opening angle	270
S	3.5
Material	stainless steel
Functions	free swing hinges