

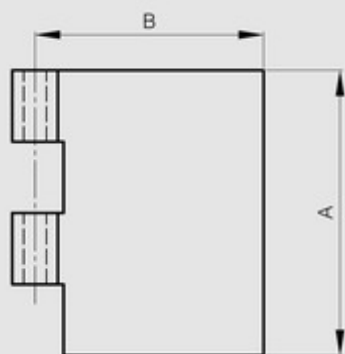
## Half leaves for Modulo hinges - thickness 3 mm

Model : 50-1-3994



Leaves can be combined together and with either:

- a 6 mm diameter expanded pin (BG) (part numbers 27-1-3820, 27-1-3823),
- a 6 mm pin in POM (part number 27-1-3938),
- a 6 mm diameter headed pin (BT) (part numbers 27-1-3826, 27-1-3829) with a plug (part numbers 27-1-3832, 27-1-3835).



|                  |               |
|------------------|---------------|
| Material         | steel         |
| Finish           | raw           |
| A (length)       | 80            |
| B (width)        | 60            |
| D (pin diameter) | 6             |
| C                | 3             |
| Weight (g)       | 130.2         |
| Opening angle    | 270           |
| Material         | steel         |
| Functions        | Modulo system |