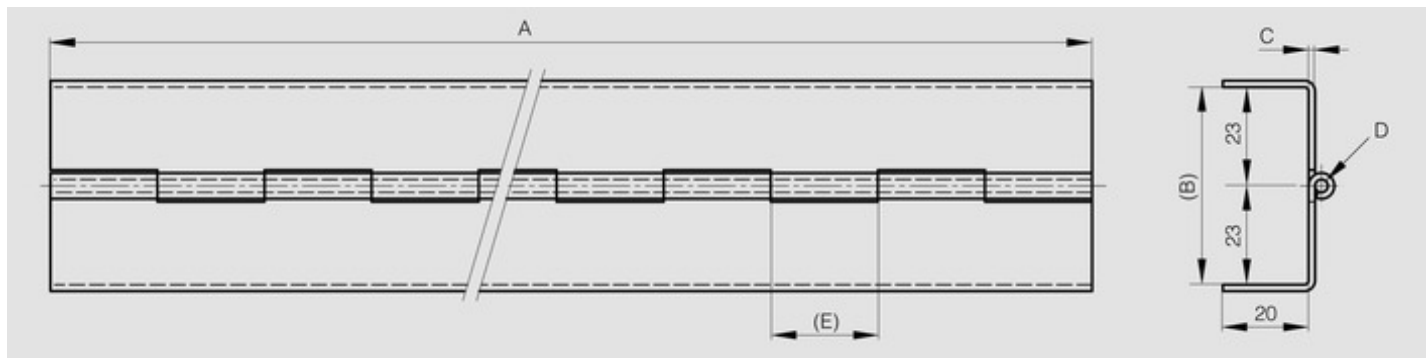


Continuous hinge with two cranked leaves

Model : 39-1-3634



Opening angle 270°. Other lengths and pin materials are available on request. Specific drilling requirements are also available on request.



Material	steel
Finish	zinc plated
A (length)	1995
D (pin diameter)	3
B (width)	46
C	1.5
Weight (g)	1910
E	25
Opening angle	180
Note	undrilled
Material	steel
Functions	continuous hinges
Pin material	304 stainless steel