

Compact magnetic catch

Model : 16-7-4308

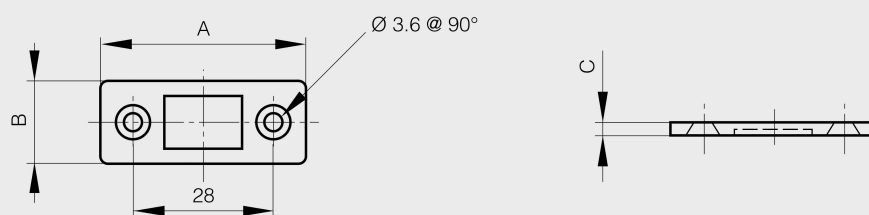


Suitable for temperatures below 80°C.

To avoid breakage, counterplate should not connect with magnet.

Screw heads should not protude above the base plate.

For the stainless steel version, magnet is coated with acrylic resin to be corrosion resistant.



Material	steel
Finish	nickel plated
A (length)	41
B (width)	16.5
C	3.0
Weight (g)	14
Opening type	swinging
Locking option	magnetic
Material	steel
Latching system	catch
Force	8kg