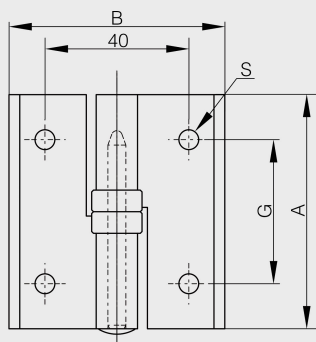


## Clean room lift-off hinges - 65 x 60 mm

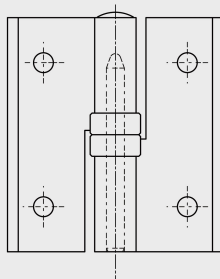
Model : 14-7-3878



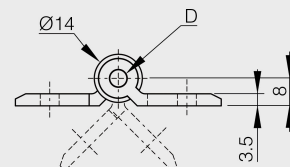
No metal-to-metal contact. Polyacetal bushings minimize particles.  
Door size: max. W600 x L800.  
Door weight: max. 8 kg/pair.  
303 stainless steel pin.



14-7-3877



14-7-3878



Material	aluminium
Finish	anodised
A (length)	65
B (width)	60
D (pin diameter)	5
Weight (g)	49
G (pitch)	40
Opening angle	270
Note	type 2
S	5.5
Material	aluminium
Functions	free swing hinges