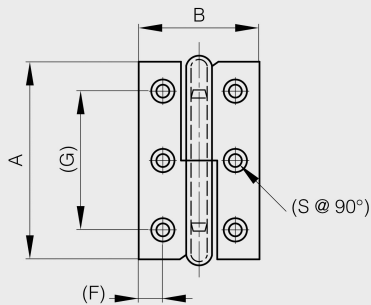


Lift-off hinges 50 x 30 mm and 60 x 40 mm

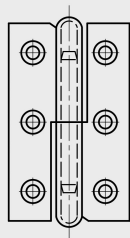
Model : 14-7-3394



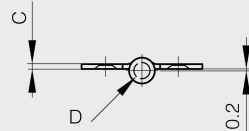
Drilled or undrilled versions.



14-7-3378 & 14-7-3380 & 14-7-3394



14-7-3379 & 14-7-3381 & 14-7-3395



Material	steel
Finish	nickel plated
A (length)	50
D (pin diameter)	4
B (width)	30
C	1.3
Weight (g)	20
G (pitch)	34
F (pitch)	6
Opening angle	270
Note	type 1 / drilled
S	3.6
Material	steel

Functions

lift-off hinges