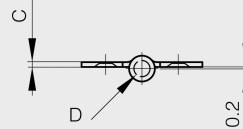
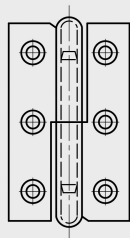
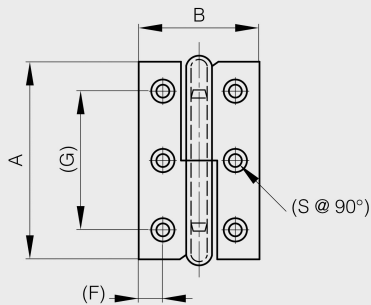


Lift-off hinges 50 x 30 mm and 60 x 40 mm

Model : 14-7-3378



Drilled or undrilled versions.



14-7-3378 & 14-7-3380 & 14-7-3394

14-7-3379 & 14-7-3381 & 14-7-3395

Material	steel
Finish	raw
A (length)	50
D (pin diameter)	4
B (width)	30
C	1.2
Weight (g)	21
Opening angle	270
Note	Typ 1 / ungebohrt
Material	steel
Functions	lift-off hinges