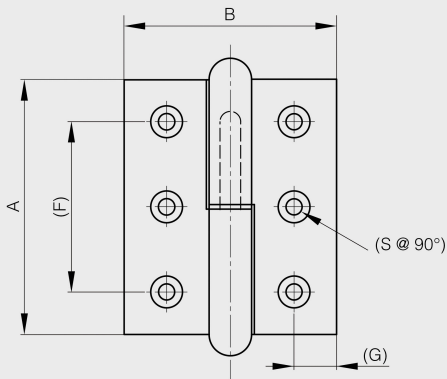


Forged lift-off hinges

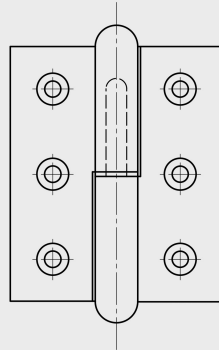
Model : 14-1-3333



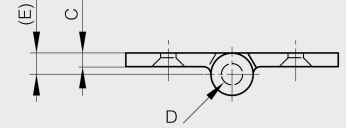
With raw brass washer.



14-1-3328 & 14-1-3330
14-1-3332 & 14-1-3334 & 14-1-3336



14-1-3329 & 14-1-3331
14-1-3333 & 14-1-3335 & 14-1-3337



Material	steel
Finish	raw
A (length)	72
B (width)	60
D (pin diameter)	6
C	4
Weight (g)	156
E	6
G (pitch)	12
F (pitch)	48
Opening angle	270
Note	type 2
S	6.5

Material	steel
Functions	for railway applications