

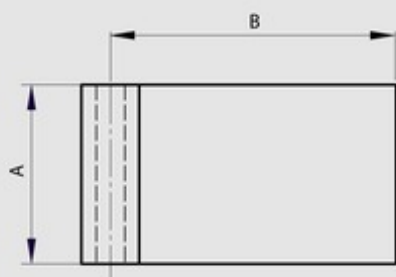
Half leaves for Modulo pin hinges - thickness 3 mm

Model : 12-1-3944



Leaves can be combined together and with either:

- a 6 mm diameter expanded pin (BG) (part numbers 27-1-3820, 27-1-3823),
- a 6 mm pin in POM (part number 27-1-3938),
- a 6 mm diameter headed pin (BT) (part numbers 27-1-3826, 27-1-3829) with a plug (part numbers 27-1-3832, 27-1-3835).



Material	304 stainless steel
Finish	deburred
A (length)	40
B (width)	120
D (pin diameter)	6
C	3
Weight (g)	126
Opening angle	270
Material	stainless steel
Functions	Modulo system