

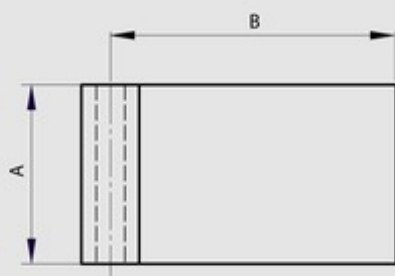
Half leaves for Modulo pin hinges - thickness 4 mm

Model : 12-1-3876



Leaves can be combined together and with either:

- a 8 mm diameter expanded pin (BG) (part numbers 27-1-3821, 27-1-3824),
- a 8 mm diameter headed pin (BT) (part numbers 27-1-3827, 27-1-3830) with a plug (part numbers 27-1-3833, 27-1-3836).



| | |
|------------------|---------------------|
| Material | 304 stainless steel |
| Finish | deburred |
| A (length) | 50 |
| D (pin diameter) | 8 |
| B (width) | 50 |
| C | 4 |
| Weight (g) | 97 |
| Opening angle | 270 |
| Material | stainless steel |
| Functions | Modulo system |