

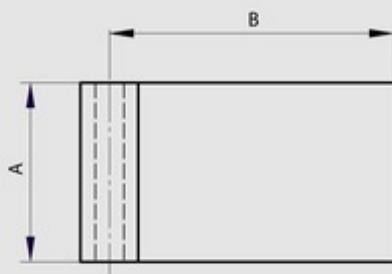
## Half leaves for Modulo pin hinges - thickness 4 mm

Model : 12-1-3873



Leaves can be combined together and with either:

- a 8 mm diameter expanded pin (BG) (part numbers 27-1-3821, 27-1-3824),
- a 8 mm diameter headed pin (BT) (part numbers 27-1-3827, 27-1-3830) with a plug (part numbers 27-1-3833, 27-1-3836).



Material	steel
Finish	raw
A (length)	50
B (width)	50
D (pin diameter)	8
C	4
Weight (g)	97
Opening angle	270
Material	steel
Functions	Modulo system