

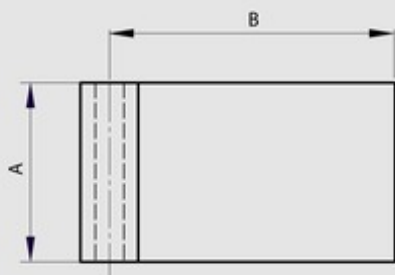
Half leaves for Modulo pin hinges - thickness 3 mm

Model : 12-1-3867



Leaves can be combined together and with either:

- a 6 mm diameter expanded pin (BG) (part numbers 27-1-3820, 27-1-3823),
- a 6 mm pin in POM (part number 27-1-3938),
- a 6 mm diameter headed pin (BT) (part numbers 27-1-3826, 27-1-3829) with a plug (part numbers 27-1-3832, 27-1-3835).



| | |
|------------------|---------------|
| Material | steel |
| Finish | raw |
| A (length) | 40 |
| D (pin diameter) | 6 |
| B (width) | 50 |
| C | 3 |
| Weight (g) | 55.7 |
| Opening angle | 270 |
| Material | steel |
| Functions | Modulo system |