

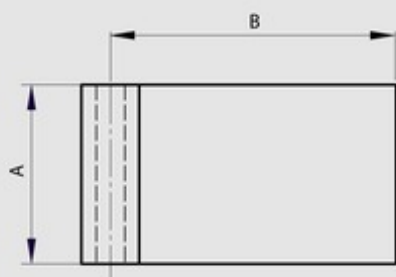
Half leaves for Modulo pin hinges - thickness 3 mm

Model : 12-1-3866



Leaves can be combined together and with either:

- a 6 mm diameter expanded pin (BG) (part numbers 27-1-3820, 27-1-3823),
- a 6 mm pin in POM (part number 27-1-3938),
- a 6 mm diameter headed pin (BT) (part numbers 27-1-3826, 27-1-3829) with a plug (part numbers 27-1-3832, 27-1-3835).



Material	steel
Finish	raw
A (length)	40
D (pin diameter)	6
B (width)	30
C	3
Weight (g)	36.9
Opening angle	270
Material	steel
Functions	Modulo system