

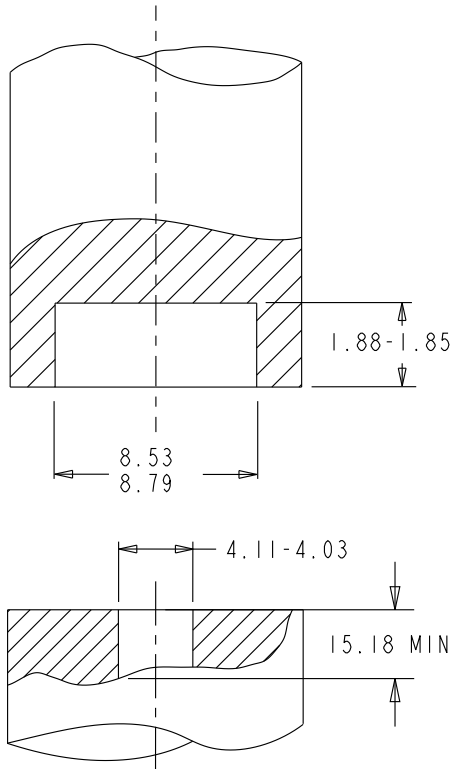
NOTES:

- 1 - PERFORMANCE WHEN PROPERLY
INSTALLED INTO 1.02 MIN. THICK,
COLD-ROLLED STEEL PANEL, (HRB 45-65)

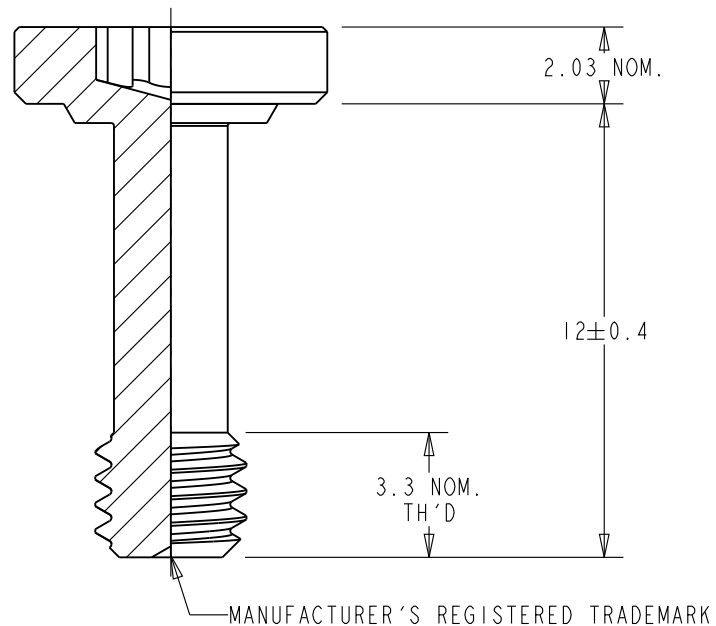
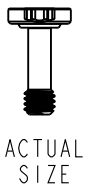
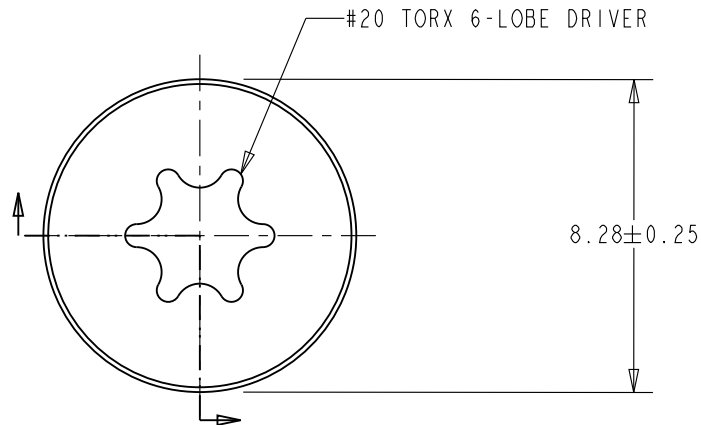
INSTALLATION: 17 kN NOM.
PUSH-OUT: 1150 N NOM.
TIGHTENING TORQUE: 1.7 N-m MAX.
PULL THRU: 5700 N NOM.

- ALL DIMENSIONS IN MILLIMETERS

RECOMMENDED
INSTALLATION PUNCH



RECOMMENDED
INSTALLATION ANVIL




SEE PEM TECHNICAL SUPPORT SECTION OF OUR WEBSITE (WWW.PEMNET.COM) FOR RELATED STANDARDS AND SPECIFICATIONS.

NO IDENTIFIED CUSTOMER SPECIFIC SPECIAL CHARACTERISTICS

© 2021 PennEngineering

NOTICE: CONFIDENTIAL PROPRIETARY INFORMATION. THIS PRINT CONTAINS IDEAS, INFORMATION, AND INTELLECTUAL PROPERTY WHICH ARE THE EXCLUSIVE PROPERTY OF PENNENGINEERING. RECIPIENT MUST KEEP THE INFORMATION DISCLOSED HEREIN CONFIDENTIAL AND RECIPIENT IS EXPRESSLY PROHIBITED FROM COPYING OR PUBLICATION OF THIS PRINT EXCEPT TO OTHERS IN THEIR ORGANIZATION ON A NEED-TO-KNOW BASIS. RECIPIENT FURTHER ACKNOWLEDGES THAT THIS INFORMATION IS NOT SUBJECT TO ANY PRIOR ASSIGNMENT, LICENSE AGREEMENT, IP OWNERSHIP AGREEMENT OR INVENTION/WORK AGREEMENT WITH ANY THIRD PARTY.

A	22-NOV-2021	21-3509
REV	DATE	ECN #

THREAD: M4 x 0.7-6g		MOUNTING HOLE: 4		+0.08 0					
MATERIAL: CARBON STEEL		PANEL THICKNESS:		1.02 MIN.					
HEAT TREAT: HEAT TREATED		MAX. PANEL HARDNESS:		HRB 80 (HB 150)					
FINISH: ZINC PLATED, 5µm, COLORLESS		MIN. CENTERLINE-TO-EDGE:		5					
FINISH SPEC.: SEE NOTE		<div><div>PennEngineering®</div></div>							
DESCRIPTION: M4x0.7-6g SPINNING CLINCH BOLT, L=12									
GEN. DRW: SCBX-XX-CUST		SCALE: 5x	FROM FILE: C09-05422		CHK BY:	DWG NO. YSCB-84951-Z1		REV: A	