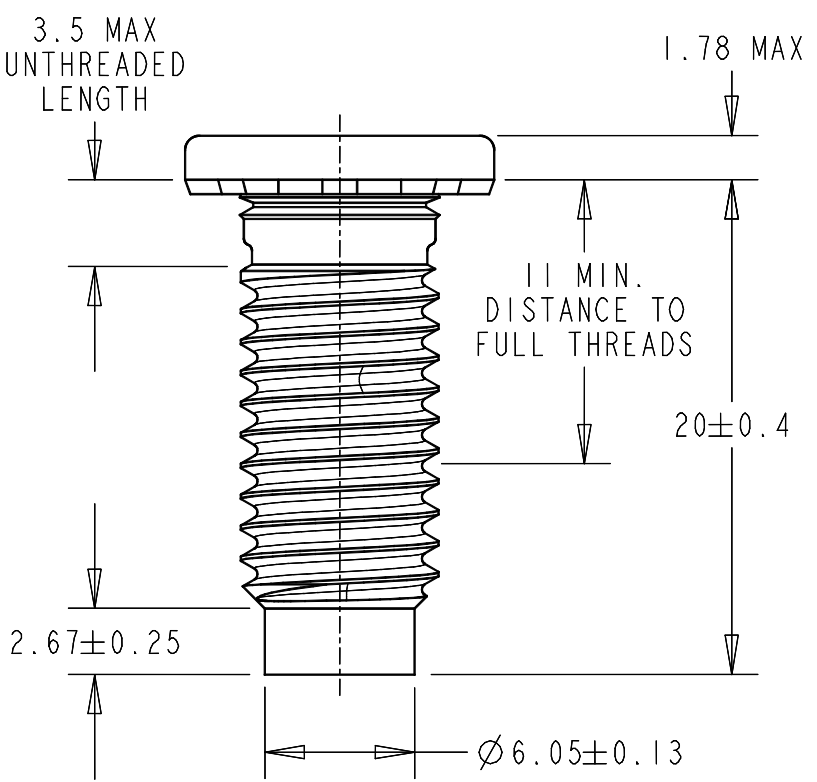
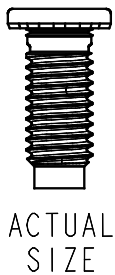
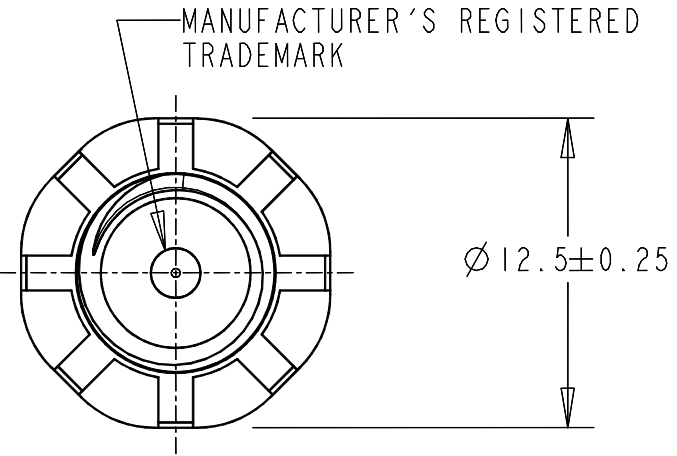
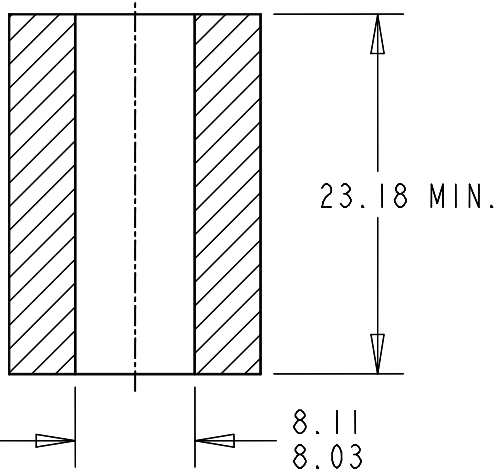
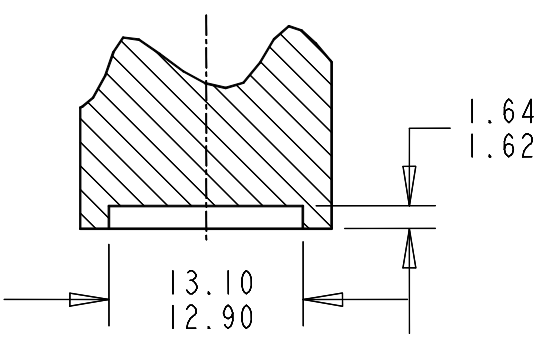


- NOTES:
- PERFORMANCE VALUES WHEN PROPERLY INSTALLED IN CRS PANEL 1.2 -2.5 mm THICK, WITH A ROCKWELL HARDNESS OF HRB 45-65
 INSTALL FORCE: 43.6 kN NOM.
 PUSHOUT: 1771 N
 TORQUE-OUT: 21.5 Nm
 PULL THRU: 26.6 kN
 - MEETS MATERIAL AND HEAT-TREAT REQUIREMENTS OF PROPERTY CLASS 9.8.



RECOMMENDED INSTALLATION TOOLING



NOTICE: CONFIDENTIAL PROPRIETARY INFORMATION. THIS PRINT CONTAINS IDEAS, INFORMATION, AND INTELLECTUAL PROPERTY WHICH ARE THE EXCLUSIVE PROPERTY OF PENNENGINEERING. RECIPIENT MUST KEEP THE INFORMATION DISCLOSED HEREIN CONFIDENTIAL AND RECIPIENT IS EXPRESSLY PROHIBITED FROM COPYING OR PUBLICATION OF THIS PRINT EXCEPT TO OTHERS IN THEIR ORGANIZATION ON A NEED-TO-KNOW BASIS.

© 2008 PennEngineering

A	03/08/07	08-0614
REV	DATE	ECN #

THREAD:	M8x1.25-6g
MATERIAL:	MEDIUM CARBON STEEL
HEAT TREAT:	HARDEN & TEMPER
FINISH:	ZINC NICKEL, COLORLESS PASSIVATE, SEALED
FINISH SPEC.:	DBL 8451.76
DESCRIPTION:	SELF-CLINCHING HEAVY HEAD STUD

MOUNTING HOLE:	8.0	+0.13 -0
PANEL THICKNESS:	1.2 MIN.	
MAX. PANEL HARDNESS:	HRB 85	
MIN. ϕ TO EDGE DISTANCE:	12.7	

