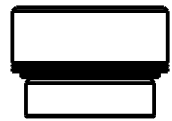


NOTES:

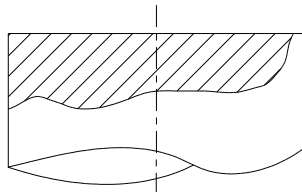
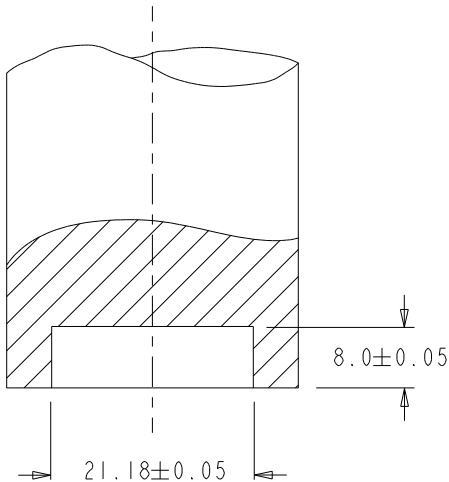
PERFORMANCE WHEN PROPERLY
INSTALLED INTO 6.1mm MIN. THICK
CRS PANEL HRB 45-60

INSTALLATION FORCE: 55.6 KN NOM.
PUSH-OUT: 5600 N NOM.
TORQUE-OUT: 100 N-m NOM.

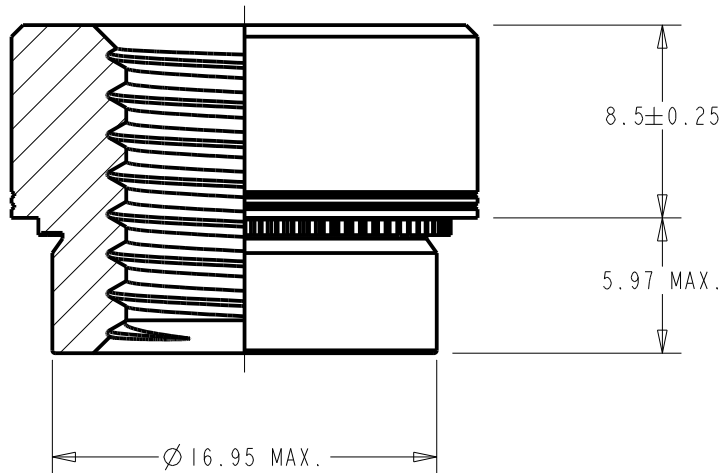
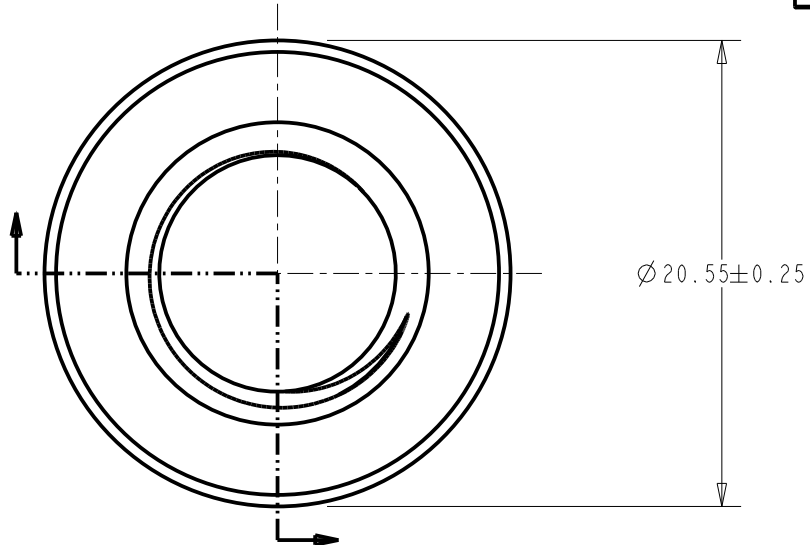


ACTUAL
SIZE

RECOMMENDED
INSTALLATION PUNCH



RECOMMENDED
INSTALLATION ANVIL




© 2011 PennEngineering

ALL UNITS IN MILLIMETERS.

NOTICE: CONFIDENTIAL PROPRIETARY INFORMATION. THIS
PRINT CONTAINS IDEAS, INFORMATION, AND INTELLECTUAL
PROPERTY WHICH ARE THE EXCLUSIVE PROPERTY OF
PENNGENGINEERING. RECIPIENT MUST KEEP THE INFORMATION
DISCLOSED HEREIN CONFIDENTIAL AND RECIPIENT IS EXPRESSLY
PROHIBITED FROM COPYING OR PUBLICATION OF THIS PRINT EXCEPT
TO OTHERS IN THEIR ORGANIZATION ON A NEED-TO-KNOW BASIS.

A	12-FEB-2011	11-0392
REV	DATE	ECN #

THREAD:	M12 x 1.75-6H	MOUNTING HOLE:	17 $\begin{smallmatrix} +0.08 \\ 0 \end{smallmatrix}$
MATERIAL:	LOW CARBON STEEL	PANEL THICKNESS:	6.1 MIN.
HEAT TREAT:	CARB & TEMP	MAX. PANEL HARDNESS:	HRB 80
FINISH:	ZINC PLUS CLEAR CHROMATE	MIN. CENTERLINE-TO-EDGE:	16
FINISH SPEC.:	ASTM B633, SCI, TYPE III, COLORLESS	 PennEngineering®	
DESCRIPTION:	SELF-CLINCHING, THREADED FASTENER		
GEN. DRW:	_S-CSTD	SCALE:	3x
FROM FILE:	C06-0610	CHK BY:	
DWG NO.	S-M12-221	REV:	A