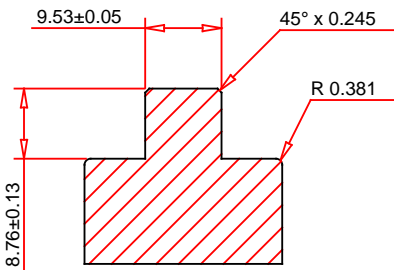
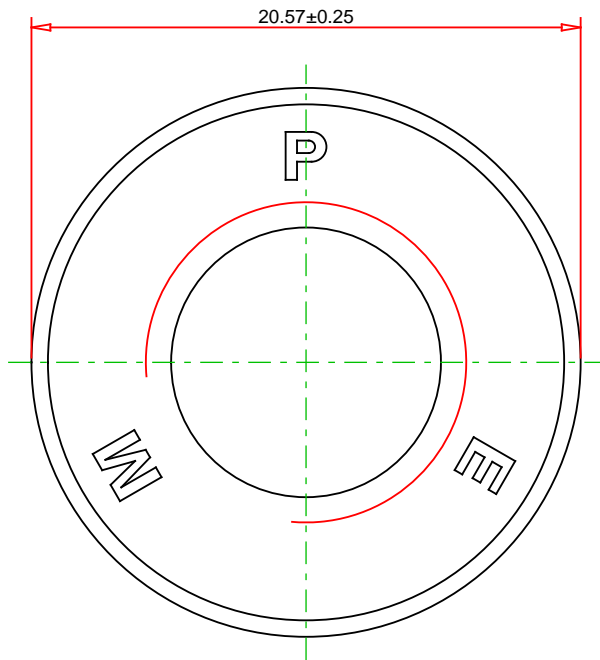
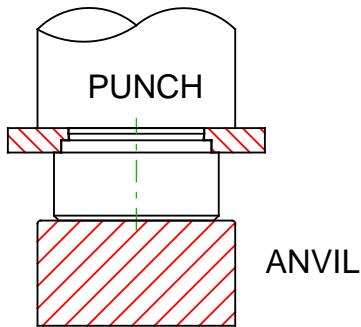
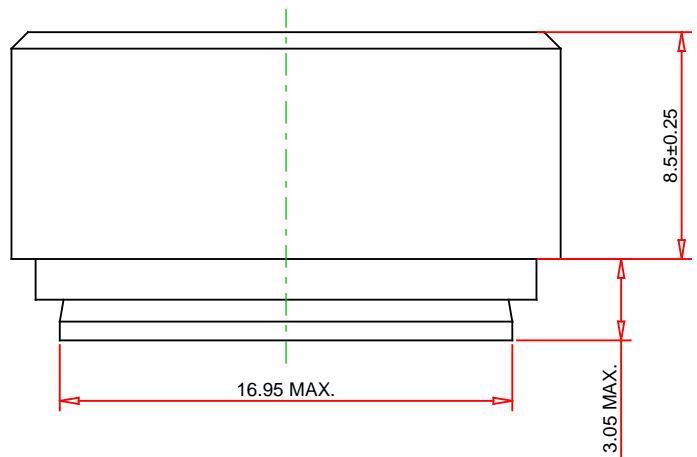


RECOMMENDED
INSTALLATION
TOOLING



PROTRUSION ANVIL



© 2019 PennEngineering

ALL DIMENSIONS IN MILLIMETERS

DATE 4-JUL-2019

NOTE : DRAWING NOT TO SCALE

THREAD :	M12 x 1.75	MOUNTING HOLE DIA. :	17 +0.08 -0.00
MATERIAL:	STEEL	PANEL THICKNESS:	3.18 MINIMUM
HEAT TREAT:	YES	MAX. PANEL HARDNESS:	HRB 80 / HB 150
FINISH:	ZINC PLATED, 5µm, COLORLESS	MIN CENTERLINE-TO-EDGE:	16

DESCRIPTION :
SELF-CLINCHING NUTS - TYPES S, SS, CLS, CLSS, SP -
METRIC

PART NO. :
S-M12-1ZI



PennEngineering®

EMAIL: TECHSUPPORT@PEMNET.COM
WWW.PEMNET.COM