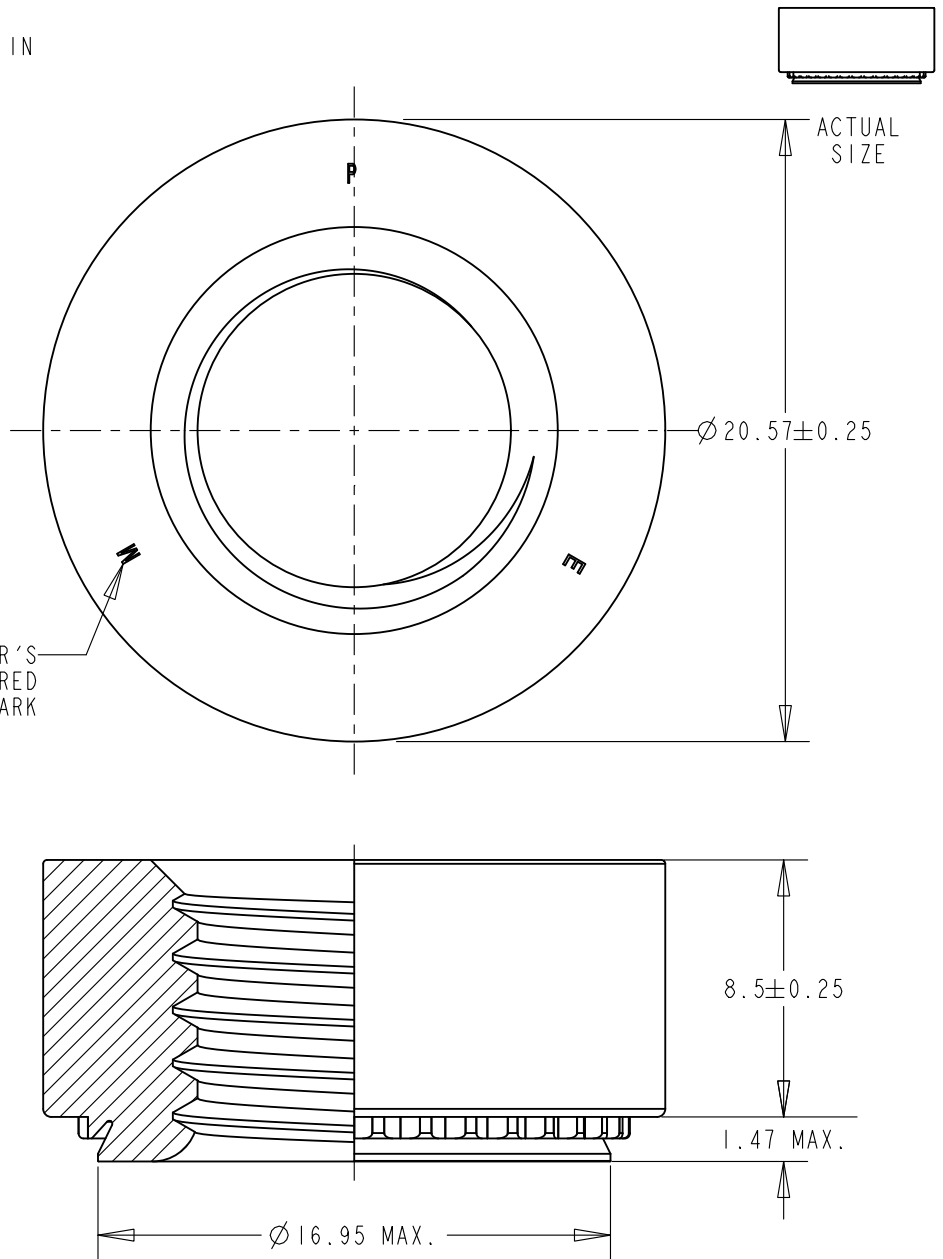
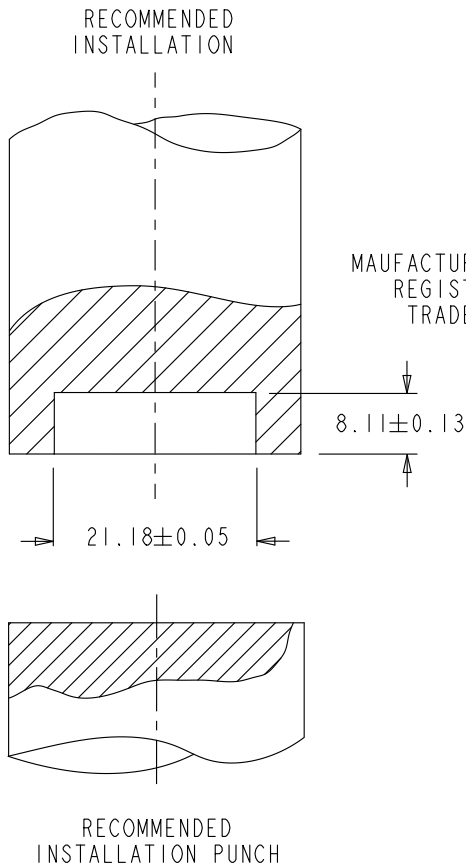


NOTES:

- PERFORMANCE WHEN PROPERLY INSTALLED IN CRS, 3.2 mm THICK, WITH A ROCKWELL HARDNESS OF HRB 53
- INSTALL FORCE: 54.7 kN NOM.
- PUSH-OUT: 2900 N AVG.
- TORQUE-OUT: 43.9 Nm AVG.

-ALL DIMENSIONS IN MILLIMETERS



SEE PEM TECHNICAL SUPPORT SECTION OF OUR WEBSITE (WWW.PEMNET.COM) FOR RELATED STANDARDS AND SPECIFICATIONS.
NO IDENTIFIED CUSTOMER SPECIFIC SPECIAL CHARACTERISTICS

© 2021 PennEngineering

NOTICE: CONFIDENTIAL PROPRIETARY INFORMATION. THIS PRINT CONTAINS IDEAS, INFORMATION, AND INTELLECTUAL PROPERTY WHICH ARE THE EXCLUSIVE PROPERTY OF PENNENGINEERING. RECIPIENT MUST KEEP THE INFORMATION DISCLOSED HEREIN CONFIDENTIAL AND RECIPIENT IS EXPRESSLY PROHIBITED FROM COPYING OR PUBLICATION OF THIS PRINT EXCEPT TO OTHERS IN THEIR ORGANIZATION ON A NEED-TO-KNOW BASIS. RECIPIENT FURTHER ACKNOWLEDGES THAT THIS INFORMATION IS NOT SUBJECT TO ANY PRIOR ASSIGNMENT, LICENSE AGREEMENT, IP OWNERSHIP AGREEMENT OR INVENTION/WORK AGREEMENT WITH ANY THIRD PARTY.

A	18-MAY-2021	21-1534
REV	DATE	ECN #

THREAD:	M12 x1.75-6H	MOUNTING HOLE:	17.0 ^{+0.08} _{-0.00}
MATERIAL:	CARBON STEEL	PANEL THICKNESS:	1.6 MIN.
CONDITION:	HEAT TREATED	MAX. PANEL HARDNESS:	HRB 80 (HB 150)
FINISH/COLOR:	ZINC PLATED, 5µm, COLORLESS	MIN. CENTERLINE-TO-EDGE:	16
FINISH SPEC.:	ASTM B633, SCI (5µm), TYPE III,		
DESCRIPTION:	M12x1.75-6H SELF-CLINCHING NUT, T=8.5		

MODEL PATH:	SNUT-CSTD / C06-01950	SCALE:	4x	DWG NO.:	S-M12-021	REV:	A
-------------	-----------------------	--------	----	----------	-----------	------	---