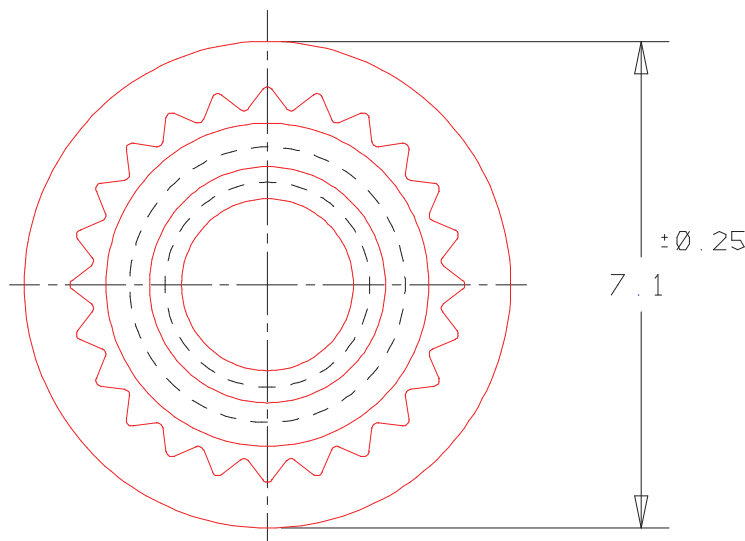
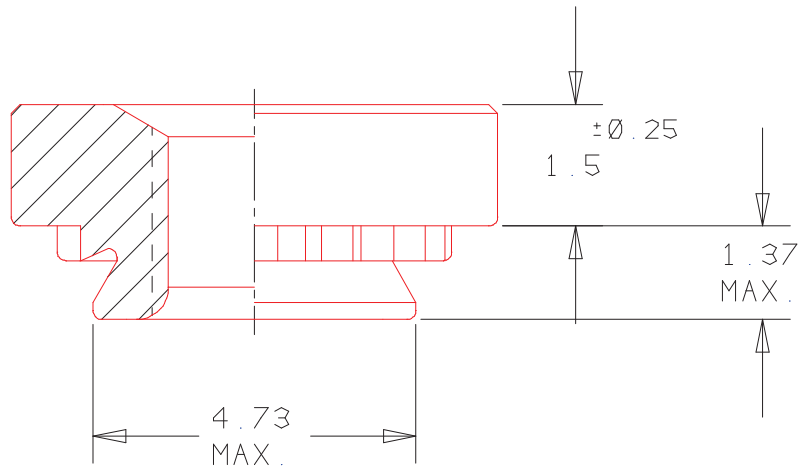


MM	INCH
0.08	.003
0.25	.010
1.37	.054
1.4	.055
1.5	.059
4.73	.186
4.75	.187
5.6	.220
7.1	.280



ACTUAL
SIZE



© 1999 Penn Engineering & Manufacturing Corp.

NOTICE: CONFIDENTIAL PROPRIETARY INFORMATION. THIS PRINT CONTAINS IDEAS, INFORMATION, AND INTELLECTUAL PROPERTY WHICH ARE THE EXCLUSIVE PROPERTY OF PENN ENGINEERING & MANUFACTURING CORP. RECIPIENT MUST KEEP THE INFORMATION DISCLOSED HEREIN CONFIDENTIAL AND RECIPIENT IS EXPRESSLY PROHIBITED FROM COPYING OR PUBLICATION OF THIS PRINT EXCEPT TO OTHERS IN THEIR ORGANIZATION ON A NEED-TO-KNOW BASIS.

REV	DATE	ECN #
A	3/2/99	99-0369

THREAD	M3 X Ø.5-6H	MOUNTING HOLE:	4.75 $\begin{matrix} +0.08 \\ \emptyset \end{matrix}$
MATERIAL	LOW CARBON STEEL	PANEL THICKNESS:	1.4 MIN.
HEAT TREAT	HARDEN & TEMPER	MAX. PANEL HARDNESS:	HRB 80
FINISH	ZINC PLUS CLEAR CHROMATE	MIN. ϕ TO EDGE DISTANCE:	5.6
FINISH SPEC	ASTM B633, SC1, TYPE III, COLORLESS	 PENN ENGINEERING & MANUFACTURING CORP. DANBORO, PENNSYLVANIA 18916	
DESC	SELF-CLINCHING NUT		

CAD NO. 47270	SCALE 8X	CHK BY	DATE	BY GJS	DATE 3/2/99	NO. S-3.5M3-2ZI	REV A
---------------	----------	--------	------	--------	-------------	-----------------	-------