

# Haeger 618™ MSP 5e

### The 618™ MSP 5e features:

- 6 ton (53kN) ram force and 18 inch (450mm) throat depth with adjustable ram retract position.
- Reliability/energy efficiency of a fully hydraulic machine.
- Haeger's patented safety system.
- Tooling Protection System and Batch Counter.

### Positive Stop System (Optional)

The Positive Stop System provides an easily adjustable method of precisely maintaining the stopping point of the machine cylinder. The system is particularly well suited for improving uniformity on soft, delicate work pieces. It is also effective when inserting small hardware. In addition to aluminum, the system also provides excellent insertion results on a wide variety of softer materials such as fiberglass, printed circuit boards, and many plastic or composite materials.

### MAS 9 or MAS 350 Modular Autofeed System (Optional)

Customer has the choice to pick either feed system based on which type of auto tooling they want. The maximum stud and standoff lengths are up to 30mm.



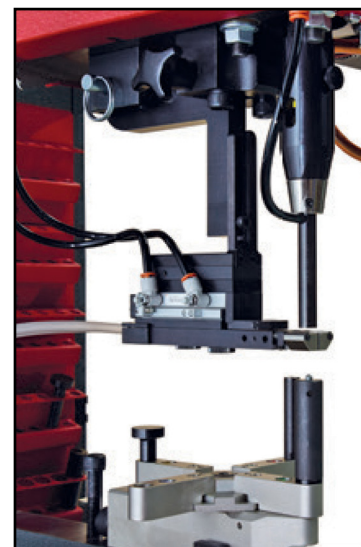
Modular Autofeed System.

### Built-in TPS Controls

The Tooling Protection System (TPS) is designed to protect both the tooling and the workpiece from damage.

### Tooling rack

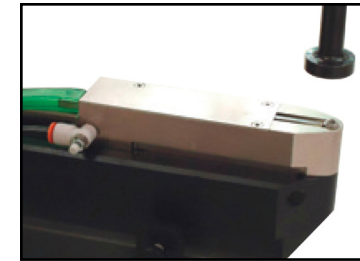
Quick and easy access to tooling.



Multi-shuttle tooling platform for nuts studs and standoffs.

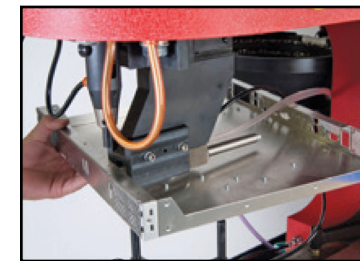
### Multi-Shuttle Tooling Platform for Nuts, Studs and Standoffs.

The Multi-Shuttle Platform provides a universal quick and easy tool change over between nuts, studs and standoffs – enabling 2-minute total tool changes without realignment. Changeover between Manual and Automatic Tooling setup is faster and easier.

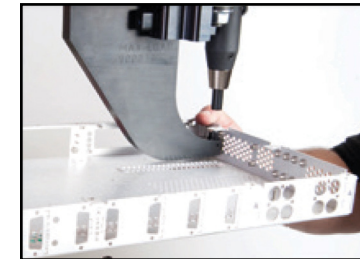


### Automatic Bottom Feed Tooling (ABFT)

for inserting nuts into at parts as well as into hard-to-reach holes. Such as those on the underside of a flange.



Automatic Bottom Feed J-Frame is used for those difficult to reach flanges.

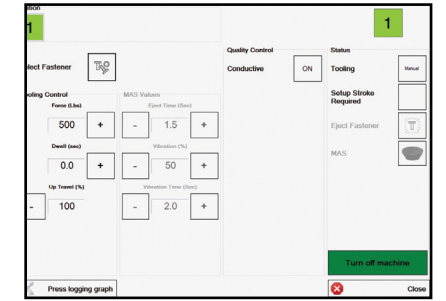


Manual tooling J-Frame is used for small boxes and short reverse flanges.

### Specifications

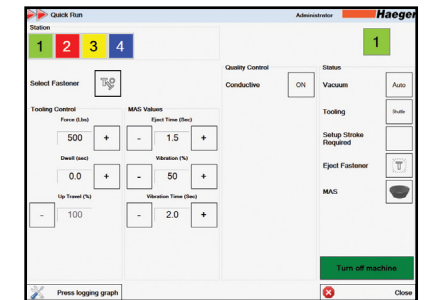
Force Range	Adjustable 600 lbs. (2.6 kN) to 12,000 lbs. (53 kN)
Repeatability	+/- 2% of force setting
Throat Depth	18" (450 mm)
Stroke Length	Adjustable 0 to 8.0" (0 to 200 mm)
Adjustable up stroke	3/8" - 6" (10 - 150 mm)
Oil Tank Reservoir	10 gallons (39 liters)
Hydraulic pump motor	2 HP 3 Phase Low 9 A 208-240 V / High 3.7 A 380-480 V
Electrical	200 to 575 V 3 phase - 50 or 60 Hz
Weight	1600 lbs. (726 kg)
Footprint	45"L x 34"W x 84"H (1092 mm x 864 mm x 2134 mm)
Fastener Range	.256 to 5/16" (M2 to M8)

For more information on the 618™ MSPe and other Haeger® products, visit our website at [www.haeger.com](http://www.haeger.com) or contact your authorized Haeger® distributor.

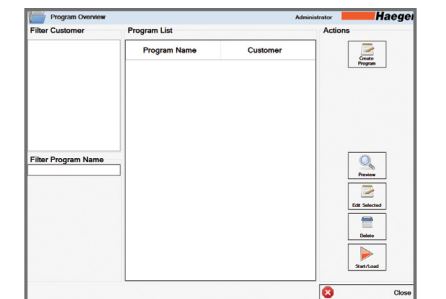


### Single Station settings:

Operators can set the Force, Dwell and Up Travel from this single station screen.



**Multi-Station:** Multi-Station is an option that allows the operator to insert more than one fastener in a program. Each station can be configured to have its own individual Force, Dwell Time and Up Travel.



### Programs:

Up to 10,000 programs can be stored and loaded.