

2

ACCIAIO INOX
STAINLESS STEEL
EDELSTAHL
ACIER INOX
INOX

A2

ZIGRINATO SOTTO LA TESTA
KNURLED UNDERNEATH THE HEAD

INSERTI FILETTATI CILINDRICI GODRONATI
KNURLED CYLINDRICAL THREADED INSERTS
BLINDNIETMUTTERN RUNDSCHAFT GERÄNDEL
INSERTS FILETÉS CRANTÉS CYLINDRIQUES
TUERCAS REMACHABLES CILINDRICAS ESTRIDADAS

ITTG

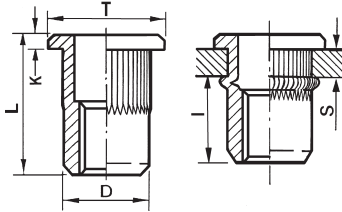
TESTA TONDA




FLAT HEAD

FLACHKOPF

TÊTE CYLINDRIQUE

CABEZA PLANA



CODICE CODE		S GRIP	D <small>+0,07/-0,1</small>	 <small>+0,1/-0</small>	T <small>+/-0,5</small>	K <small>+/-0,15</small>	L <small>+/-0,5</small>	I ~	 Nm
85IXITGM03C	M3	0,5 - 1,5	4,9	5	7	0,8	10	5	2
85IXITGM03L		1,5 - 3,0							
85IXITGM04C	M4	0,5 - 2,0	5,9	6	9	0,8	10,5	6,5	5
85IXITGM04L		2,5 - 4,0							
85IXITGM05C	M5	0,5 - 2,5	6,9	7	10	1	13	8	8,5
85IXITGM05L		2,0 - 4,0							
85IXITGM06C	M6	0,5 - 3,0	8,9	9	12,3	1,3	15,5	9,2	15
85IXITGM06L		3,5 - 6,0							
85IXITGM08C	M8	1,0 - 3,5	10,9	11	14,5	1,5	18,5	11,5	26
85IXITGM08L		3,0 - 6,0							
85IXITGM10C12	M10	0,8 - 3,5	11,9	12	16	1,7	19	10,5	50
85IXITGM10L12		3,5 - 6,0							
85IXITGM10C13		1,0 - 4,0							
85IXITGM10L13		3,0 - 6,0							
85IXITGM12C16	M12	1,0 - 4,0	15,9	16	23	2	25	16,5	80
85IXITGM12L16		3,5 - 7,0							

ITRG

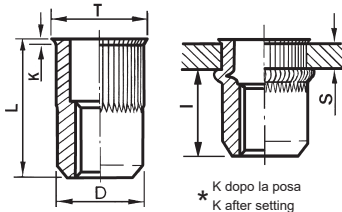
TESTA RIDOTTA




REDUCED COUNTERSUNK HEAD

KLEINER SENKKOPF

TÊTE RÉDUITE

CABEZA REDUCIDA



CODICE CODE		S GRIP	D <small>+0,07/-0,1</small>	 <small>+0,1/-0</small>	T <small>+/-0,5</small>	K* <small>+/-0,15</small>	L <small>+/-0,5</small>	I ~	 Nm
85IXITRGM03C	M3	0,5 - 2,0	4,9	5	6	0,4	9	5,5	1
85IXITRGM03L		1,5 - 2,5							
85IXITRGM04C	M4	0,5 - 2,0	5,9	6	7	0,5	10,5	6,5	3
85IXITRGM04L		2,5 - 4,0							
85IXITRGM05C	M5	0,5 - 2,0	6,9	7	8	0,5	11,5	7,2	6
85IXITRGM05L		2 - 4							
85IXITRGM06C	M6	0,5 - 3,0	8,9	9	10	0,6	14	9	11
85IXITRGM06L		2,5 - 5,0							
85IXITRGM08C	M8	1,0 - 3,5	10,9	11	12	0,5	16,5	10,5	20
85IXITRGM08L		3,5 - 6,0							
85IXITRGM10C12	M10	0,8 - 3,0	11,9	12	13,5	0,8	18	11,2	32
85IXITRGM10L12		2,0 - 4,5							
85IXITRGM10C13		1,0 - 3,5							
85IXITRGM10L13		3,5 - 6,0							
85IXITRGM10XL13		6,0 - 8,0	12,9	13	14	0,7	23	13,3	
85IXITRGM12C16	M12	1,0 - 4,0	15,9	16	17,6	0,75	24,2	14	50