

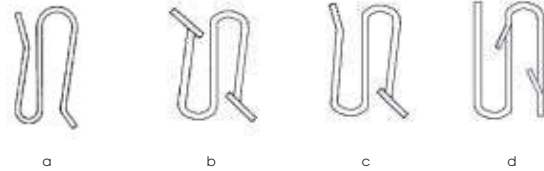
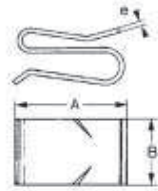
## FASTENERS FOR PANELS

### Double snap-on fasteners

#### Recommended use:

These fasteners are mainly used to join panels end to end. They provide an advantageous alternative to screwed fasteners. They are easy to dismantle and reuse.

#### SHAPES



P1 = PANEL THICKNESS	P2 = PANEL THICKNESS	REFERENCE	A	B	e	SHAPE VARIANT
0.7 to 2.5	0.7 to 2.5	SCO 6043 ZCJ	17.7	20	0.7	c
0.8 to 1.5	0.8 to 1.5	C 36552 ▲	13.2	13	0.5	a
0.8 to 2.3	0.8 to 2.3	C 8452 DK	10	12	0.4	b
1 to 1.5	1.8 to 2.5	SCO 5784 ▲	13	9	0.6	c
1.7 to 1.8	3.8	SCO 7216 ZGJ	15.6	15	0.6	c
1.8	2.4	SCO 7286B TGJ	11.6	15	0.6	b
2	2	C 5039A DK	14.6	12	0.6	b
2 to 3.2	0.6 to 0.8	C 46131 DD	9.4	12	0.5	d
2 to 3.2	1.9 to 2.3	C 46134 ▲	10	12	0.5	d
2 to 3	2.5	SCO 6714 ▲	19.5	15	0.5	b
2.3 to 2.7	0.8	C 2631 ZF	18	25	0.6	c
2.5	9	C 8266 DK	16	14	0.5	c

**FASTENER**

**MATERIAL** Treated spring steel

**SURFACE** See table on cover flap

**TREATMENT** Except for parts with reference "▲": Phosphating

**COLOUR** See table on cover flap  
Except for parts with reference "▲": Black paint

#### Recommended assembly method:



1. Position the fastener at the edge of the panel.
2. Fit the two pinching sections of the double fastener over the two panels using a simple tool.
3. Once correctly fitted in position the fastener is self-retaining.

## CLIPS AND RIVETS

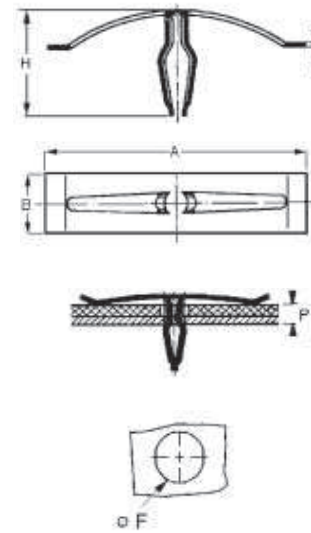
### Metal clips



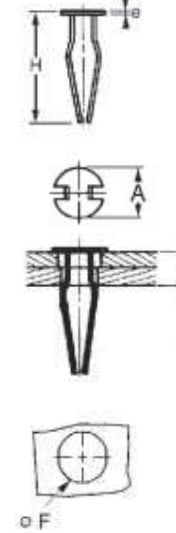
#### Recommended use:

Lightweight panel assemblies. Manual assembly. Easy to dismantle and reuse.

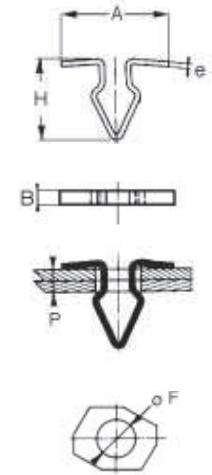
#### TYPE 1



#### TYPE 2



#### TYPE 3



P = PANEL THICKNESS	REFERENCE	H	A	B	e	Ø F	TYPE
1.5 to 2	C 4747 ▲	12	20	3	0.6	6	3
2.1 to 2.8	C 4718 ▲	13.5	17.2	3	0.6	6	3
3 to 4	C 4774 DC	18	Ø 7.2		0.5	4.5	2
3.6 to 4.5	C 47261 PV	18	44	9	0.5	5	1

**Recommended assembly method:**  
Install manually by simply pressing into place.

**CLIP**

**MATERIAL** Treated spring steel

**SURFACE** See table on cover flap

**TREATMENT** Except for parts with reference "▲": Phosphating

**COLOUR** See table on cover flap  
Except for parts with reference "▲": Black paint