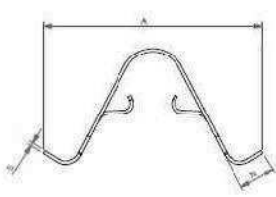
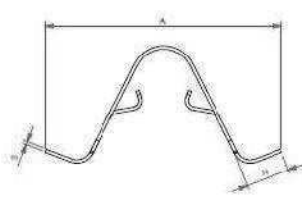


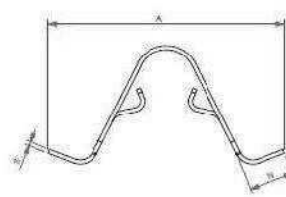
MOLLE A SCATTO SERIE MGS SPRING LATCHES SERIES MGS



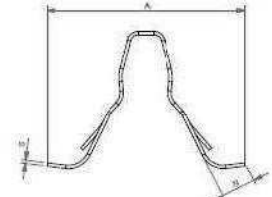
MGS1245



MGS1840



MGS1850



MGS1800

CODICE PART NUMBER	P MM	A MM	B MM	G MM	H MM	N MM	E MM	F MM	S MM	TIPO TYPE
MGS1245	0,8 - 1,2	27	14	7,50	17	4,3	11,0	8	0,45	1
MGS1840	0,8 - 1,8	29	16	7,00	17	5,3	12,7	8	0,40	1
MGS1850	0,8 - 1,8	29	16	7,00	17	5,3	12,7	8	0,50	1
MGS1800	0,5 - 1,2	24,50	7,6		17	4,5	12,7	8	0,40	2
TOLLERANZE / TOLERANCES		+/- 1,0	+/- 0,10	+/- 0,20	+/- 0,30	+/- 0,40	+/- 0,10	+/- 0,10	+/- 0,05	

CODIFICA:

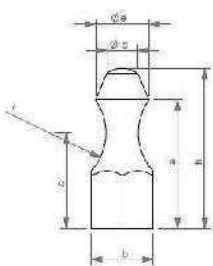
MACXXXXXXXXYZ

XXXXX	CODICE / PART NUMBER
Y	MATERIALE / RAW MATERIAL
Z	FINITURA SUPERFICIALE / SURFACE TREATMENT

(Z) FINITURA SUPERFICIALE / SURFACE TREATMENT	
G	GREZZO / RAW
O	OLIATURA / OILED
3	BRUNITURA / BURNISHING FIAT 9.57414
5	RIV EC 5 - FIAT 9.57513

(Y) MATERIALE / RAW MATERIAL	
C	C67 + AC UNI EN 10132-4

PERNO CONSIGLIATO SUGGESTED PIN



a	b	c	d	e	h	r
12,5	8	0,3	4	5,2	15,8	5,5

