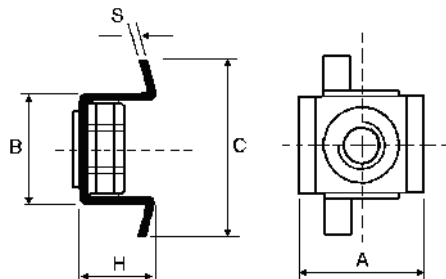


Dadi in Gabbia con Alette Cage nuts with Vanes



Vite	Spessore pannello	H	A	B	C	S	Cava pannello	Codice
M 5	0.5-0.6	5.6	14	12.4	20.4	0.5	13x8	FX78135A
M 5	0.7-0.8	5.8	14	12.4	20.4	0.5	13x8	FX78135B
M 5	0.9-1,0	6.0	14	12.4	20.4	0.5	13x8	FX78135C
M 5	1.2-1.3	6.3	14	12.4	20.4	0.5	13x8	FX78135D
M 5	1.5-1.6	6.6	14	12.4	20.4	0.5	13x8	FX78135E
M 5	1.7-1.8	6.8	14	12.4	20.4	0.5	13x8	FX78135F
M 5	2.0-2.1	7.1	14	12.4	20.4	0.5	13x8	FX78135G
M 6	0.5-0.6	5.6	14	12.4	20.4	0.5	13x8	FX78136A
M 6	0.7-0.8	5.8	14	12.4	20.4	0.5	13x8	FX78136B
M 6	0.9-1,0	6.0	14	12.4	20.4	0.5	13x8	FX78136C
M 6	1.2-1.3	6.3	14	12.4	20.4	0.5	13x8	FX78136D
M 6	1.5-1.6	6.6	14	12.4	20.4	0.5	13x8	FX78136E
M 6	1.7-1.8	6.8	14	12.4	20.4	0.5	13x8	FX78136F
M 6	2.0-2.1	7.1	14	12.4	20.4	0.5	13x8	FX78136G
M 6	0.5-0.6	6.3	15.5	13.6	21.6	0.5	14x9	FX79146A
M 6	0.7-0.8	6.5	15.5	13.6	21.6	0.5	14x9	FX79146B
M 6	0.9-1,0	6.7	14.5	13.6	21.6	0.5	14x9	FX79146C
M 6	1.2-1.3	7.0	15.5	13.6	21.6	0.5	14x9	FX79146D
M 6	1.5-1.6	7.3	15.5	13.6	21.6	0.5	14x9	FX79146E
M 6	1.7-1.8	7.5	15.5	13.6	21.6	0.5	14x9	FX79146F
M 6	2.0-2.1	7.8	15.5	13.6	21.6	0.5	14x9	FX79146G
M 8	0.5-0.6	7,7	17.5	15,8	26,0	0.6	10,5x16,5	FX716108A
M 8	0.7-0.8	7,9	17.5	15,8	26,0	0.6	10,5x16,5	FX716108B
M 8	0.9-1,0	8,1	17.5	15,8	26,0	0.6	10,5x16,5	FX716108C
M 8	1.2-1.3	8,4	17.5	15,8	26,0	0.6	10,5x16,5	FX716108D
M 8	1.5-1.6	8,7	17.5	15,8	26,0	0.6	10,5x16,5	FX716108E
M 8	1.7-1.8	8,9	17.5	15,8	26,0	0.6	10,5x16,5	FX716108F
M 8	2.0-2.1	9,2	17.5	15,8	26,0	0.6	10,5x16,5	FX716108G

- Tolleranza generale ± 0.3
- Materiale: Gabbia Inox 18/8, Dado 6 S

- General tolerance ± 0.3
- Material: Stainless Steel Cage 18/8, Nuts 6 S

- Generaltoleranz ± 0.3
- Werkstoff: Kiste aus rostfreier Stahl 18/8, Mutter 6 S