

## FASTENERS FOR PANELS

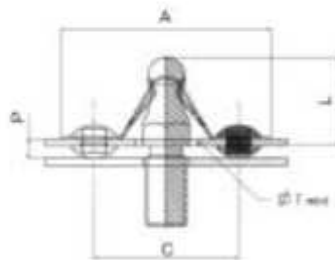
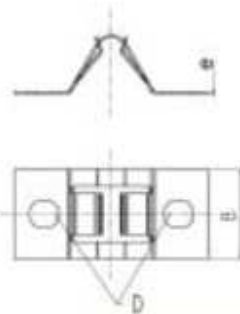
### Closing systems, small model



#### Recommended use:

These systems consist of a stud that clips into a fastener formed by spring blades. The fasteners are screwed or riveted to their substrate. The fastener is opened and closed simply by pulling or pressing. The insertion and extraction forces depend on the material thickness of the fastener.

#### FASTENER

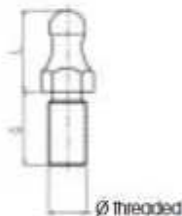


REFERENCE	A*	B	C*	D	e	Ø F min.	AVERAGE INSERTION FORCE** (DaN)	AVERAGE EXTRACTION FORCE** (DaN)
C 4410	26	12	18	3.2	0.3	7.2	1.5	2
C 4411	26	12	18	3.2	0.4	7.2	2.5	3
C 4412	26	12	18	3.2	0.5	7.2	4	5
C 4413	26	12	18	3.2	0.6	7.2	6	8
C 4414	26	12	18	3.2	0.7	7.2	7.5	12
C 4415	26	12	18	3.2	0.8	7.2	9	15

\* Dimensions A and C refer to the assembled part.

\*\* Average force recorded in the test lab on a typical assembly.

#### STUD



P = PANEL THICKNESS	L	REFERENCE	Ø	G
0.9 to 1.4	11.4	R 7053	4.2 metal/wood screw type	8
1.5 to 2.1	12	R 6333	M5 threaded	10
2.2 to 3	12.7	R 6707	M3 tapped	4.5
2.5 to 3.8	13.4	R 7105	4.2 metal/wood screw type	8
3.1 to 4.1	14	R 6486	M5 threaded	10
4.2 to 5.2	15	R 7253	M4 threaded	7
7.2 to 8.2	18	R 6374	M5 threaded	10

	FASTENER	STUD
<b>MATERIAL</b>	Treated spring steel	Steel
<b>SURFACE</b>	Phosphating	Zinc plating
<b>TREATMENT</b>	+ Paint	
<b>COLOUR</b>	Black	White