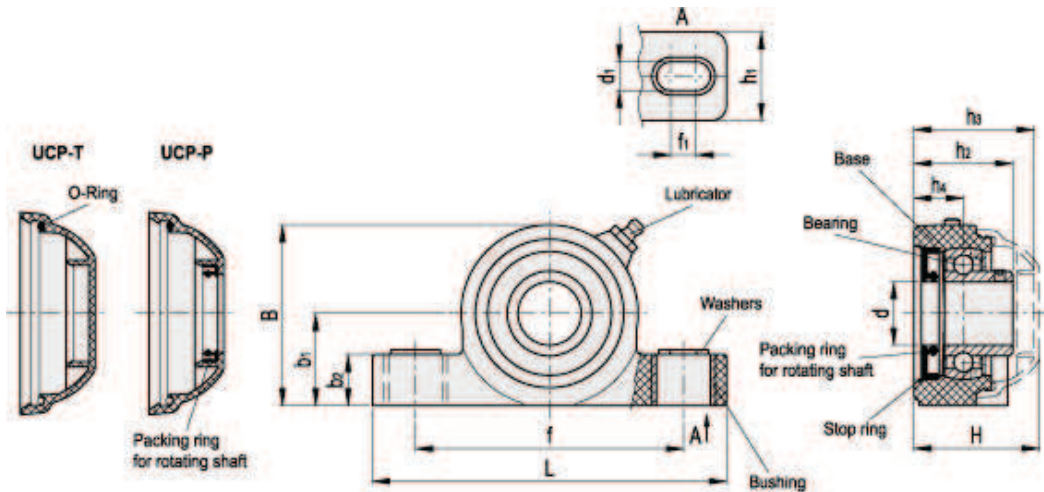


# UCP

Straight self-aligning brackets



## technical informations

### Base

Glass-fibre reinforced polyamide based (PA) technopolymer, black colour, matte finish.

### Bushings, washers and stop ring

AISI 304 stainless steel.

### Bearing

High quality with traceability codes. Chrome steel.

### Lubricator

Nickel-plated brass.

### Packing rings

NBR rubber.

### Cap

Glass-fibre reinforced polypropylene based (PP) technopolymer, RAL 7015 grey colour, matte finish.  
Closed cap for head bracket or for pass-through shafts.

### Standard executions

- **UCP-T**: head bracket with closed cap.
- **UCP-P**: bracket for pass-through shaft with cap and NBR rubber packing ring for rotating shafts.

### Features and applications

Overall dimensions are in compliance with ISO 3228.  
A system of completely sealed packing rings assures the protection of the bearing from dirt ingress.  
Max shaft misalignment = 2,5°.

### Instructions of use

Assembly with shafts without end stops. For optimum operation, we recommend periodic lubrication with a common grease resistant to high temperatures and oxidation.

### Special executions on request

- AISI 440C stainless steel bearing.
- Bearing in inch sizes.
- Brackets for shafts with diameters in different sizes.
- Brackets in antibacterial material or in polypropylene based (PP) technopolymer, packing rings and oil seal type VITON®\*.

\* Registered trademark by DuPont Dow Elastomers.

Standard Elements		Main dimensions												Bearing static load	Bearing dynamic load	Bracket load	Weight	
Code	Description	d	d <sub>1</sub>	f <sub>1</sub>	H	L	B	f	b <sub>1</sub>	b <sub>2</sub>	h <sub>1</sub>	h <sub>2</sub>	h <sub>3</sub>	h <sub>4</sub>	[N]	[N]	[N]	g
419553	UCP.205-C-25-T	25	13	10	51.7	140	71.5	106	36.5	20	35	39	49	19.6	7000	14000	6000	333
419563	UCP.206-C-30-T	30	13	10	55.7	163	84.5	121	43	20	36	41.7	53	20.7	11000	19000	9000	456
419533	UCP.205-C-25-P	25	13	10	51.7	140	71.5	106	36.5	20	35	39	-	19.6	7000	14000	6000	339
419543	UCP.206-C-30-P	30	13	10	55.7	163	84.5	121	43	20	36	41.7	-	20.7	11000	19000	9000	463



ELESA and GANTER models all rights reserved in accordance with the law. Always mention the source when reproducing our drawings.

STANDARD MACHINE ELEMENTS WORLDWIDE