

Hook clamps

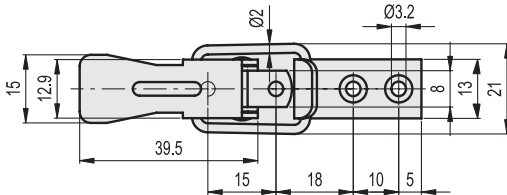
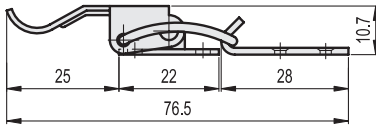
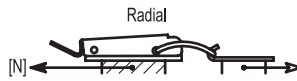
Steel or stainless steel

STANDARD EXECUTIONS

- **TLC.Z**: zinc-plated steel.
- **TLC.SST**: AISI 304 stainless steel.

SPECIAL EXECUTIONS ON REQUEST

- Hook clamps in unplated steel or nickel-plated steel.
- Catch brackets in different shapes and finishes.



TLC.Z

| Code | Description | Max. working load [N] | Load at breakage [N] | ⚖️ |
|--------|-----------------|-----------------------|----------------------|----|
| 420071 | TLC.Z-15/76.5+R | 400 | 1000 | 16 |

TLC.SST

STAINLESS STEEL

| Code | Description | Max. working load [N] | Load at breakage [N] | ⚖️ |
|--------|-------------------|-----------------------|----------------------|----|
| 420072 | TLC.SST-15/76.5+R | 400 | 1500 | 16 |