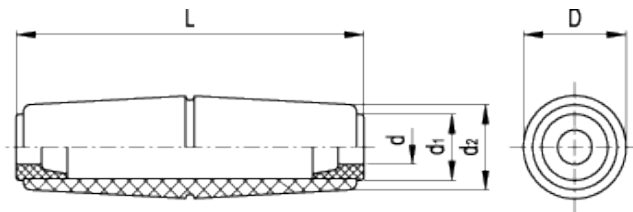


# SI.134

Revolving handles



## technical informations

### Material

Phenolic based (PF) Duroplast. Resistant to solvents, oils, greases and other chemical agents.

### Colour

Black, glossy finish with equatorial groove.

### Assembly

Plain through hole with polyamide based (PA) technopolymer guide bosses in both ends.

| Standard Elements |               | Main dimensions |    |    |                |                | Weight |
|-------------------|---------------|-----------------|----|----|----------------|----------------|--------|
| Code              | Description   | L               | D  | d  | d <sub>1</sub> | d <sub>2</sub> | g      |
| 55701             | SI.134/105-6  | 105             | 29 | 6  | 18             | 23             | 52     |
| 55711             | SI.134/105-7  | 105             | 29 | 7  | 18             | 23             | 52     |
| 55721             | SI.134/105-8  | 105             | 29 | 8  | 18             | 23             | 51     |
| 55731             | SI.134/105-10 | 105             | 29 | 10 | 18             | 23             | 50     |

ELESA and GANTER models all rights reserved in accordance with the law. Always mention the source when reproducing our drawings.

**STANDARD MACHINE ELEMENTS WORLDWIDE**