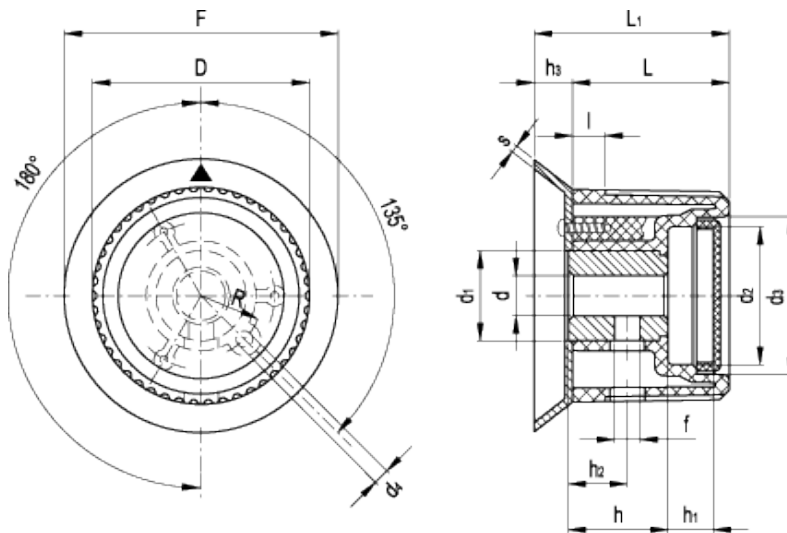


# IZN.380+K

Knurled control knobs with flange and index



ELESA Original design



## technical informations

### Material

Glass-fibre reinforced polyamide based (PA) technopolymer. Resistant to solvents, oils, greases and other chemical agents.

### Colour

Black, glossy finish.

### Boss cap

Acetal resin based (POM) technopolymer, light grey colour, push-fit assembly, removable by pressing on the outer edge (ELESA original design).

### Flange

Matte anodised aluminium, black index.

## Assembly

Black-oxide steel boss, H7 reamed hole. Assembly by means of a set screw (redrill and tap hole f), with keyway or transversal pin in the semi-machined hole (f).

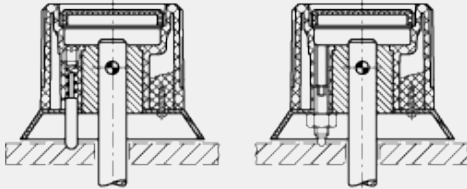
### Accessories on request

Ball and spring for clicking operation to be fitted in the assembly hole for knobs with diameter  $D \geq 48$  mm (see ball and spring [MS.](#)).

### Special executions on request (For sufficient quantities)

On the surface of the boss cap words, marks, graphic symbols, etc... can be tampoprinted in colours.

#### Assembly examples



Assembly by means of a transversal pin and spring plunger with adjustable pressure spring

Assembly by means of a transversal pin and plunger with locknut

Standard Elements		Main dimensions															Mounting hole		Weight
Code	Description	D	F	L	L <sub>1</sub>	I	d <sub>1</sub>	d <sub>2</sub>	d <sub>3</sub>	d <sub>4</sub>	h <sub>1</sub>	h <sub>2</sub>	h <sub>3</sub>	R	f	s	d <sub>H7</sub>	h	g
29021	IZN.380/32 A-6+K	32	38	26	32	5	15	19	21	-	8	9	6	-	3	0.8	6	16	32
30021	IZN.380/36 A-6+K	37	45	29	36	6	15	25	27	-	10	10	7	-	3	1	6	16	40
30121	IZN.380/40 A-8+K	42	50	32	39	7	18	29	31	-	11	11	7	-	4	1	8	17	54
30221	IZN.380/45 A-8+K	48	55	35	43	8	22	32	34	3.2	10	14	8	14	4	1	8	22	93
30321	IZN.380/50 A-10+K	52	63	39	48	9	22	37	39	4.2	13	14	9	15	4	1	10	22	100
30421	IZN.380/56 A-12+K	58	70	41	52	10	26	42	44	5.2	11	16	9	17	5	1	12	27	140
30461	IZN.380/63 A-10+K	63	78	44	57	11	26	48	50	6.2	10	16	13	19	5	1	10	30	172
30476	IZN.380/63 A-12+K	63	78	44	57	11	26	48	50	6.2	10	16	13	19	5	1	12	30	167
30521	IZN.380/63 A-14+K	63	78	44	57	11	26	48	50	6.2	10	16	13	19	5	1	14	30	162

This product had the following design awards:



STANDARD MACHINE ELEMENTS WORLDWIDE