

Mushroom handles

“Soft-touch” technopolymer

MATERIAL

High-resilience polypropylene based (PP) technopolymer coated with “soft-touch” thermoplastic elastomer (TPE) chemically bonded, hardness 70 Shore A, black colour, matte finish.

Raw material coating suitable for contact with food (FDA CFR.21 and EU 10/2011).

MAGNIFYING LENS

Transparent polyamide based (PA-T) technopolymer. Press-fit assembly. It improves the visibility of the labels.

STANDARD EXECUTION

Plain blind hole.

The elastic coupling, by press-fit assembly on h9 tolerance drawn stock bars, is not affected by vibrations and prevents the handle from slipping off (see Technical Data on page A13).

ACCESSORIES ON REQUEST

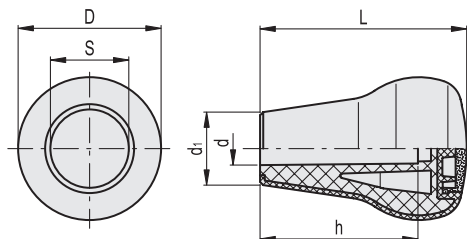
Self-adhesive labels MA. (on page 551) with standard marks and symbols to be ordered separately.

ASSEMBLY INSTRUCTIONS

1. Fit the handle, without the magnifying lens, onto slight chamfered shaft end and push as far as possible by hand or by means of a small press. Alternatively it is possible to tap the handle with a plastic or wooden mallet until firmly in place. In this case we strongly recommend to use a cloth or other suitable soft material over the product to avoid any surface damage.
2. Stick the self-adhesive label (printed on the adhesive side) to the inner surface of the magnifying lens by pressing from the centre to the external side to avoid air bubbles. Assemble the magnifying lens to the handle face recess by gently tapping with a wooden or plastic mallet, until firmly in place. The label is therefore protected by the watertight magnifying lens.



ELESA Original design



Code	Description	D	L	d	S	d1	h	△
26672	IEL.65 N-10-H SOFT	45	65	10	25	23	50	56
26671	IEL.65 N-12-H SOFT	45	65	12	25	23	50	55

